

ATF3 Rabbit Polyclonal Antibody

Catalog No: #53615



Package Size: #53615-1 50ul #53615-2 100ul

Orders: order@signalwayantibody.com
Support: tech@signalwayantibody.com

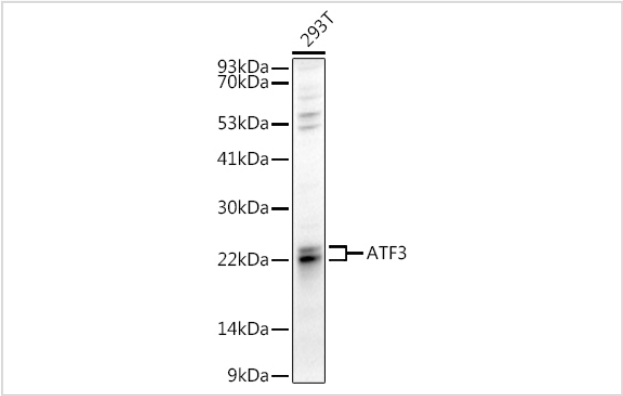
Description

Product Name	ATF3 Rabbit Polyclonal Antibody
Host Species	Rabbit
Clonality	Polyclonal
Isotype	IgG
Purification	Affinity purification
Applications	WB,IHC,IF
Species Reactivity	Human,Mouse,Rat
Immunogen Description	Recombinant fusion protein of human ATF3 (NP_001665.1).
Other Names	ATF3
Accession No.	Uniprot:P18847GenelD:467
Uniprot	P18847
GenelD	467
Calculated MW	12kDa/13kDa/14kDa/15kDa/20kDa
SDS-PAGE MW	23KDa/24KDa
Formulation	PBS with 0.02% sodium azide,50% glycerol,pH7.3.
Storage	Store at -20°C. Avoid freeze / thaw cycles.

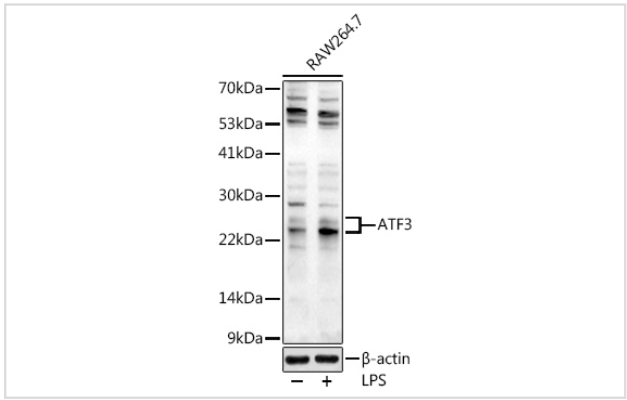
Application Details

WB 1:500 - 1:2000IHC 1:50 - 1:200IF 1:50 - 1:200

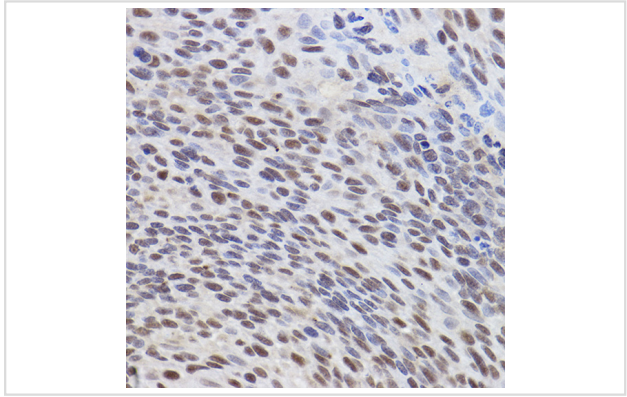
Images



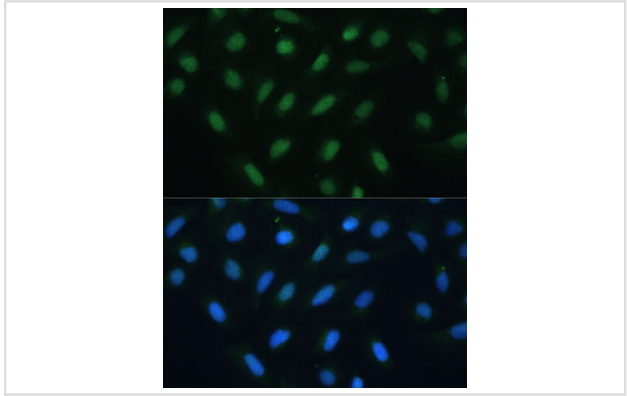
Western blot analysis of extracts of 293T cells, using ATF3 antibody.



Western blot analysis of extracts of RAW264.7 cells, using ATF3 antibody.



Immunohistochemistry of paraffin-embedded human lung cancer using ATF3 Rabbit pAb.



Immunofluorescence analysis of U-2 OS cells using ATF3 antibody.

Background

This gene encodes a member of the mammalian activation transcription factor/cAMP responsive element-binding (CREB) protein family of transcription factors. This gene is induced by a variety of signals, including many of those encountered by cancer cells, and is involved in the complex process of cellular stress response. Multiple transcript variants encoding different isoforms have been found for this gene. It is possible that alternative splicing of this gene may be physiologically important in the regulation of target genes.

Note: This product is for in vitro research use only