

NALP2 Antibody

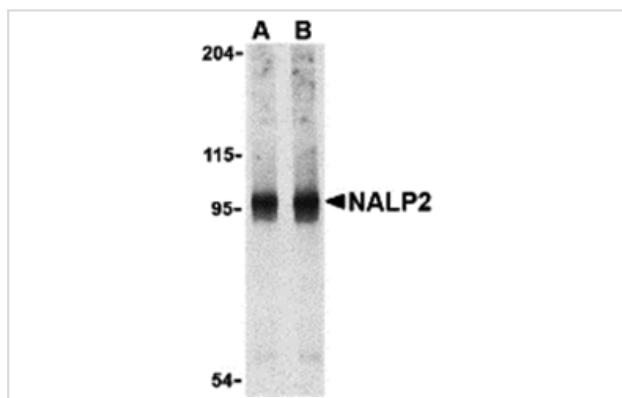
Catalog No: #24169

Orders: order@signalwayantibody.comSupport: tech@signalwayantibody.com

Description

Product Name	NALP2 Antibody
Host Species	Rabbit
Clonality	Polyclonal
Purification	Immunoaffinity chromatography purified IgG
Applications	ELISA WB
Species Reactivity	Hu Ms Rt
Immunogen Type	Peptide
Immunogen Description	Raised against a peptide corresponding to 12 amino acids near the carboxy terminus of human NALP2.
Target Name	NALP2
Other Names	NACHT domain-, leucine-rich-repeat-, and PYD-containing protein 2, PYRIN-containing APAF1-like protein2, PAN1, PYPAF2
Accession No.	Swiss-Prot:Q9NX02Gene ID:55655
Uniprot	Q9NX02
GeneID	55655;
Concentration	1mg/ml
Formulation	Supplied in PBS containing 0.02% sodium azide.
Storage	Can be stored at -20°C, stable for one year. As with all antibodies care should be taken to avoid repeated freeze thaw cycles. Antibodies should not be exposed to prolonged high temperatures.

Images



Western blot analysis of NALP2 in PC-3 cell lysate with NALP2 antibody at (A) 1 and (B) 2 ug/ml.

Background

NALP2 belongs to a family of cytoplasmic proteins that have been implicated in cell responses to apoptotic and inflammatory stimuli. Unlike the prototypical NALP protein NALP1, NALP2 only contains a NACHT domain, leucine rich repeat (LRR), and pyrin-containing domain (PYD). This protein interacts with the adapter protein ASC in addition to CARD8 and caspase-1 to form an inflammasome with high proIL-1 β -processing activity and is thought to function as a modulator of NF- κ B and procaspase-1 activation in macrophages. It has also been suggested that NALP2, in addition to other NALP family members, can act as innate sensors of pathogens in a manner similar to the toll-like receptors (TLRs). At least two alternatively spliced transcript variants encoding distinct isoforms have been found for NALP2.

Note: This product is for in vitro research use only