

## NALP1 Antibody

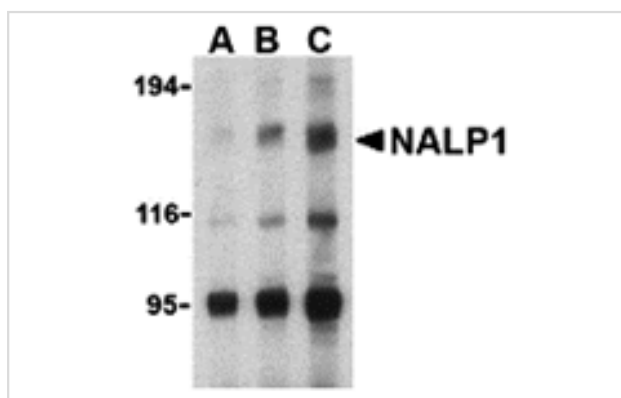
Catalog No: #24173

Orders: [order@signalwayantibody.com](mailto:order@signalwayantibody.com)Support: [tech@signalwayantibody.com](mailto:tech@signalwayantibody.com)

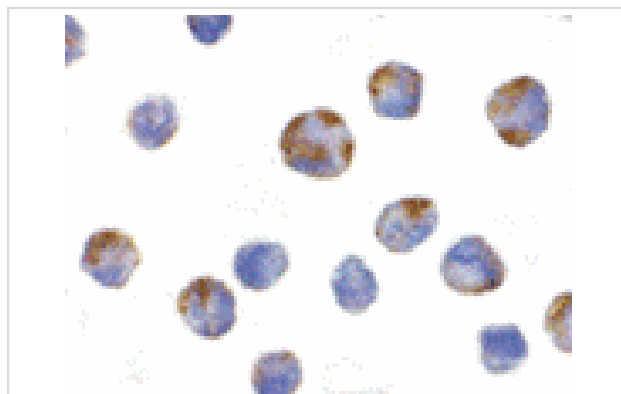
## Description

Product Name	NALP1 Antibody
Host Species	Rabbit
Clonality	Polyclonal
Purification	Immunoaffinity chromatography purified IgG
Applications	ELISA WB ICC
Species Reactivity	Hu
Immunogen Type	Peptide
Immunogen Description	Raised against a peptide corresponding to 13 amino acids near the carboxy terminus of human NALP1.
Target Name	NALP1
Other Names	CARD7, DEFCAP, NACHT domain- leucine-rich-repeat and PYD-containing protein 1
Accession No.	Swiss-Prot:Q9C000Gene ID:22861
Uniprot	Q9C000
GeneID	22861;
Concentration	1mg/ml
Formulation	Supplied in PBS containing 0.02% sodium azide.
Storage	Can be stored at -20°C, stable for one year. As with all antibodies care should be taken to avoid repeated freeze thaw cycles. Antibodies should not be exposed to prolonged high temperatures.

## Images



Western blot analysis of NALP1 in U937 cell lysate with NALP1 antibody at (A) 1, (B) 2 and (C) 4 ug/mL.



Immunocytochemistry of NALP1 in K562 cells with NALP1 antibody at 10 ug/mL.

## Background

---

NALP1 belongs to a family of cytoplasmic proteins that have been implicated in cell responses to apoptotic and inflammatory stimuli. It contains a caspase recruitment domain (CARD) in addition to a NACHT domain and leucine rich repeat (LRR). This protein interacts strongly with caspase 2 and weakly with caspase 9, as well as with Apaf-1. Transient overexpression of this gene in cultured cells was sufficient to induce apoptosis. NALP1 mRNA and protein expression levels in myeloid leukemia cells are increased following CREB (cAMP-response element binding protein) activation, suggesting that NALP1 may contribute to modulate the response of these cells to pro-inflammatory stimuli. Multiple alternatively spliced transcript variants encoding distinct isoforms have been found for NALP1.

---

Note: This product is for in vitro research use only