

TRAF6 Antibody

Catalog No: #24191

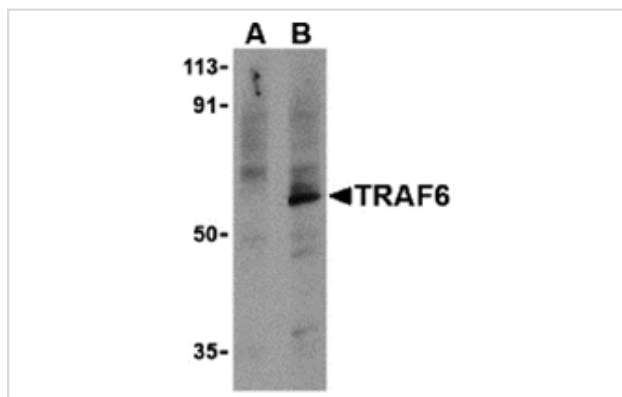
Orders: order@signalwayantibody.com

Support: tech@signalwayantibody.com

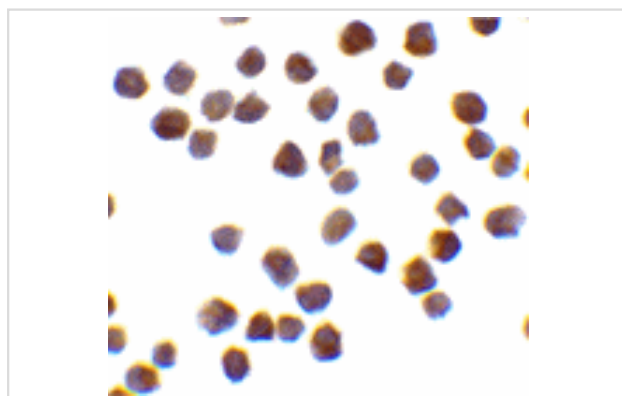
Description

| | |
|-----------------------|---|
| Product Name | TRAF6 Antibody |
| Host Species | Rabbit |
| Clonality | Polyclonal |
| Purification | Ion exchange chromatography purified |
| Applications | ELISA WB ICC |
| Species Reactivity | Hu Ms Rt |
| Immunogen Type | Peptide |
| Immunogen Description | Raised against a peptide corresponding to 14 amino acids near the C-terminus of human TRAF6. |
| Target Name | TRAF6 |
| Accession No. | Swiss-Prot:Q9Y4K3Gene ID:7189 |
| Uniprot | Q9Y4K3 |
| GeneID | 7189; |
| Concentration | 1mg/ml |
| Formulation | Supplied in PBS containing 0.02% sodium azide. |
| Storage | Can be stored at -20°C, stable for one year. As with all antibodies care should be taken to avoid repeated freeze thaw cycles. Antibodies should not be exposed to prolonged high temperatures. |

Images



Western blot analysis of TRAF6 in PC-3 cell lysates with TRAF6 antibody at 1 ug/mL in the presence (A) or absence (B) of 1 ug blocking peptide.



Immunocytochemistry of TRAF6 in K562 cells with TRAF6 antibody at 0.5 ug/mL.

Background

Signals from the IL-1 receptor (IL-1R)/Toll-like receptor (TLR) and TNF receptor (TNFR) superfamilies are critical for regulating the function of antigen-presenting cells. Signals transduced by these molecules lead to increased expression and activation of transcription factors such as NF- κ B. TNF receptor-associated factor 6 (TRAF6) is unique in that it is a signaling adapter molecule common to both families. TRAF6 is important in cytokine production, dendritic cell (DC) maturation, and the T cell stimulatory capacity of DCs in response to TLR and CD40 ligands. It can be activated in the IL-1R/TLR signaling pathway by IL-1 receptor-associated kinase 1 (IRAK-1) or by other TLR adaptor molecules such as TRIF. Also, it has been shown that TRAF6 can interact directly with TNFR family members CD40 and RANK.

Note: This product is for in vitro research use only