

## ROS1 Rabbit Polyclonal Antibody

Catalog No: #29695

Package Size: #29695-1 50ul #29695-2 100ul

Orders: order@signalwayantibody.com

Support: tech@signalwayantibody.com

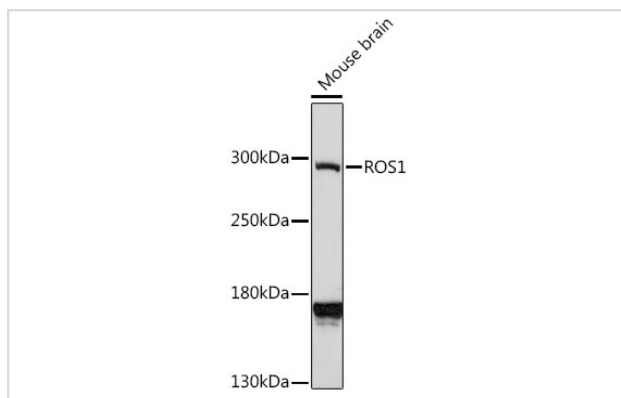
## Description

Product Name	ROS1 Rabbit Polyclonal Antibody
Host Species	Rabbit
Clonality	Polyclonal
Isotype	IgG
Purification	Affinity purification
Applications	WB
Species Reactivity	Human,Mouse
Immunogen Description	A synthetic peptide of human ROS1 (NP_002935.2).
Other Names	ROS1;MCF3;ROS;c-ros-1
Accession No.	Swiss Prot:P08922GeneID:6098
Calculated MW	263kDa
SDS-PAGE MW	263kDa
Formulation	Buffer: PBS with 0.02% sodium azide,50% glycerol,pH7.3.
Storage	Store at -20°C. Avoid freeze / thaw cycles.

## Application Details

WB □ 1:500 - 1:2000

## Images



Western blot analysis of extracts of mouse brain, using ROS1 at 1:1000 dilution.

## Background

This proto-oncogene, highly-expressed in a variety of tumor cell lines, belongs to the sevenless subfamily of tyrosine kinase insulin receptor genes. The protein encoded by this gene is a type I integral membrane protein with tyrosine kinase activity. The protein may function as a growth or differentiation factor receptor.

---

Note: This product is for in vitro research use only