

IRE1 Rabbit pAb

Catalog No: #55649

Package Size: #55649-1 50ul #55649-2 100ul

Orders: order@signalwayantibody.comSupport: tech@signalwayantibody.com

Description

Product Name	IRE1 Rabbit pAb
Host Species	Rabbit
Clonality	Polyclonal
Isotype	IgG
Purification	Affinity purification
Applications	WB,IHC,IF
Species Reactivity	Human,Mouse,Rat
Immunogen Description	Recombinant protein of human ERN1.
Other Names	ERN1;IRE1;IRE1P;IRE1a;hIRE1p
Accession No.	Swiss Prot:O75460GeneID:2081
Calculated MW	6kDa/109kDa
SDS-PAGE MW	130kDa
Formulation	Buffer: PBS with 0.02% sodium azide,50% glycerol,pH7.3.
Storage	Store at -20°C. Avoid freeze / thaw cycles.

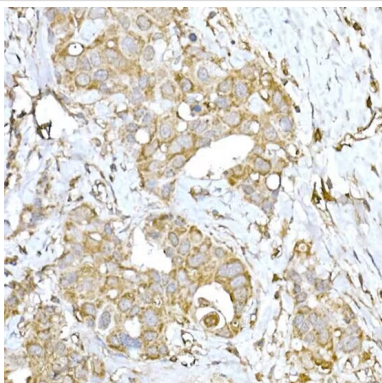
Application Details

WB1:500 - 1:2000

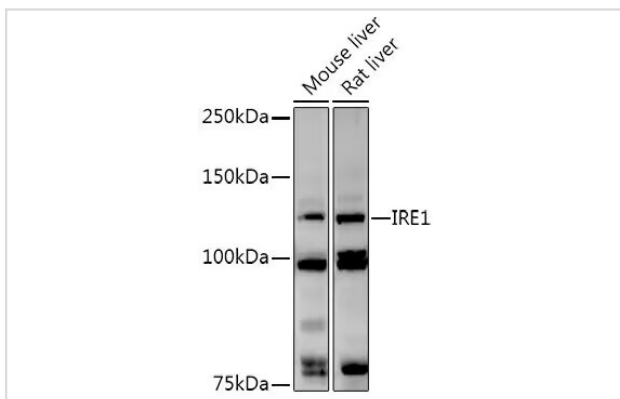
IHC1:50 - 1:200

IF/ICC1:50 - 1:200

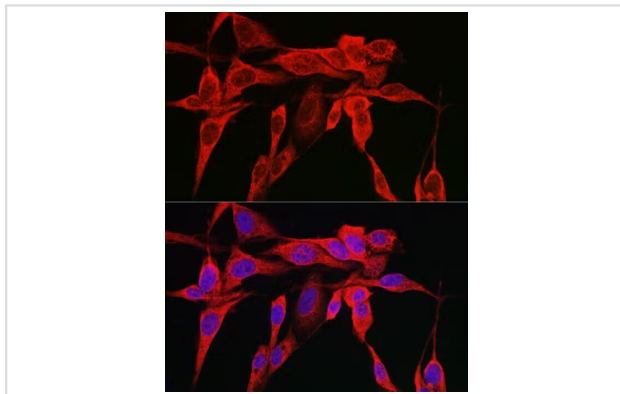
Images



Immunohistochemistry of paraffin-embedded human breast cancer using IRE1 Rabbit pAb at dilution of 1:100 (40x lens). Perform high pressure antigen retrieval with 10 mM citrate buffer pH 6.0 before commencing with IHC staining protocol.



Western blot analysis of extracts of various cell lines, using IRE1 antibody at 1:1000 dilution. Secondary antibody: HRP Goat Anti-Rabbit IgG at 1:10000 dilution. Lysates/proteins: 25ug per lane. Blocking buffer: 3% nonfat dry milk in TBST. Detection: ECL Basic Kit. Exposure time: 90s.



Immunofluorescence analysis of U2OS cells using IRE1 Rabbit pAb at dilution of 1:150 (40x lens). Blue: DAPI for nuclear staining.

Background

The protein encoded by this gene is the ER to nucleus signalling 1 protein, a human homologue of the yeast Ire1 gene product. This protein possesses intrinsic kinase activity and an endoribonuclease activity and it is important in altering gene expression as a response to endoplasmic reticulum-based stress signals.

Note: This product is for in vitro research use only