

## Pan-AKT Rabbit Polyclonal Antibody

Catalog No: #54492

Package Size: #54492-1 50ul #54492-2 100ul

Orders: order@signalwayantibody.com

Support: tech@signalwayantibody.com

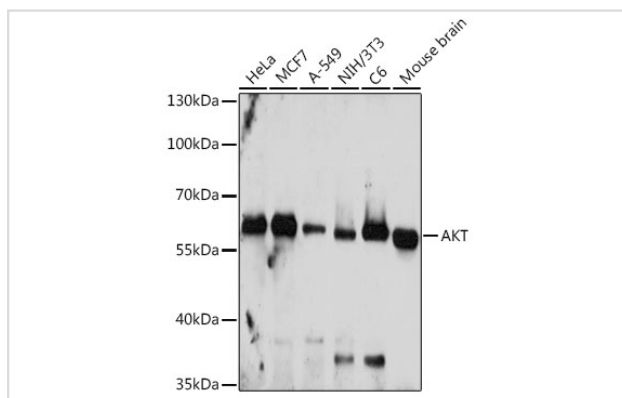
## Description

Product Name	Pan-AKT Rabbit Polyclonal Antibody
Host Species	Rabbit
Clonality	Polyclonal
Isotype	IgG
Purification	Affinity purification
Applications	WB,IHC,IF
Species Reactivity	Human,Mouse,Rat
Immunogen Description	A synthetic peptide of human AKT1/AKT2/AKT3
Other Names	AKT1/AKT2/AKT3
Accession No.	Swiss Prot:P31749/P31751/Q9Y243GeneID:207/208/10000
Uniprot	P31749/P31751/Q9Y243
Calculated MW	48kDa/55kDa/51kDa/54kDa
SDS-PAGE MW	60kDa
Formulation	Buffer: PBS with 0.02% sodium azide,50% glycerol,pH7.3.
Storage	Store at -20°C. Avoid freeze / thaw cycles.

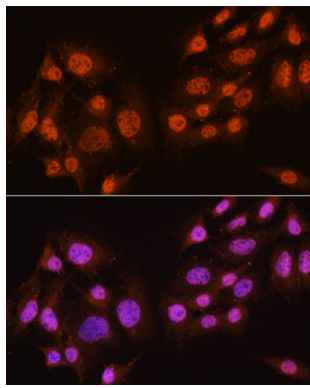
## Application Details

WB □ 1:500 - 1:1000 IHC □ 1:50 - 1:100 IF □ 1:50 - 1:100

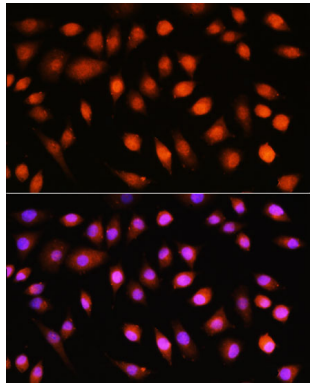
## Images



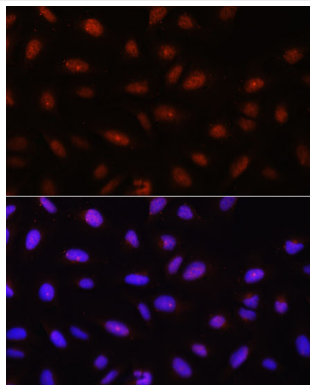
Western blot analysis of extracts of various cell lines, using AKT at 1:500 dilution.



Immunofluorescence analysis of C6 cells using AKT1/AKT2/AKT3 at dilution of 1:100. Blue: DAPI for nuclear staining.



Immunofluorescence analysis of L929 cells using AKT1/AKT2/AKT3 at dilution of 1:100. Blue: DAPI for nuclear staining.



Immunofluorescence analysis of U-2 OS cells using AKT1/AKT2/AKT3 at dilution of 1:100. Blue: DAPI for nuclear staining.

## Background

-

Note: This product is for in vitro research use only