

## NFkB-p65(Phospho-Ser529) Antibody

Catalog No: #11217

Package Size: #11217-1 50ul #11217-2 100ul

Orders: [order@signalwayantibody.com](mailto:order@signalwayantibody.com)Support: [tech@signalwayantibody.com](mailto:tech@signalwayantibody.com)

## Description

Product Name	NFkB-p65(Phospho-Ser529) Antibody
Host Species	Rabbit
Clonality	Polyclonal
Purification	Antibodies were produced by immunizing rabbits with synthetic phosphopeptide and KLH conjugates. Antibodies were purified by affinity-chromatography using epitope-specific phosphopeptide. Non-phospho specific antibodies were removed by chromatography using non-phosphopeptide.
Applications	WB IHC IF
Species Reactivity	Hu
Specificity	The antibody detects endogenous level of NFkB-p65 only when phosphorylated at serine 529.
Immunogen Type	Peptide-KLH
Immunogen Description	Peptide sequence around phosphorylation site of serine 529 (L-L-S(p)-G-D) derived from Human NFkB-p65.
Target Name	NFkB-p65
Modification	Phospho
Other Names	NFKB3; RELA; TF65; Transcription factor p65; p65
Accession No.	Swiss-Prot: Q04206NCBI Protein: NP_001138610.1
Uniprot	Q04206
GeneID	5970;
Concentration	1.0mg/ml
Formulation	Supplied at 1.0mg/mL in phosphate buffered saline (without Mg <sup>2+</sup> and Ca <sup>2+</sup> ), pH 7.4, 150mM NaCl, 0.02% sodium azide and 50% glycerol.
Storage	Store at -20°C for long term preservation (recommended). Store at 4°C for short term use.

## Application Details

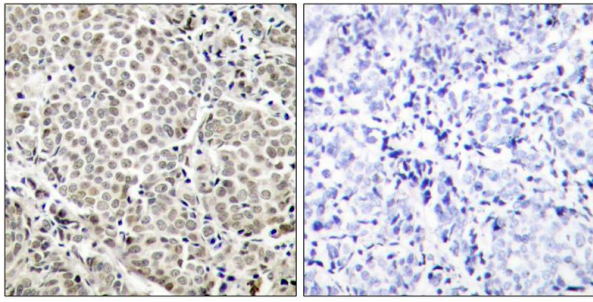
Predicted MW: 65kd

Western blotting: 1:500~1:1000

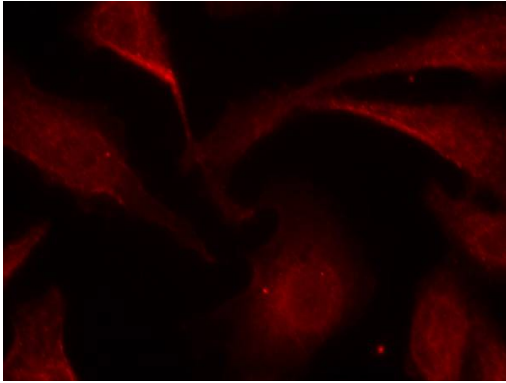
Immunohistochemistry: 1:50~1:100

Immunofluorescence: 1:100~1:200

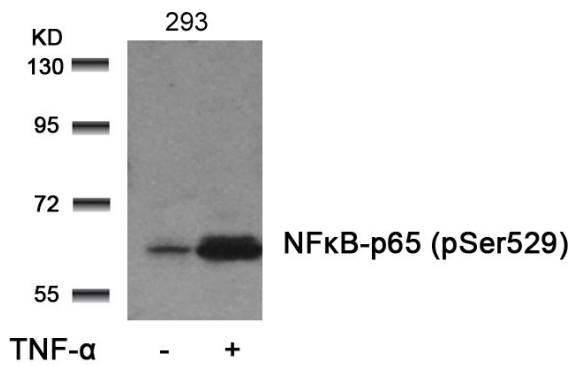
## Images



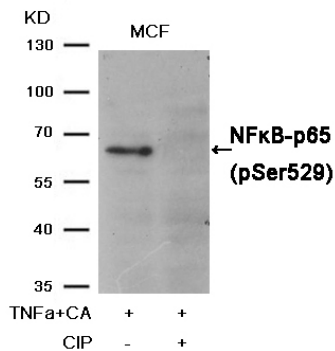
Immunohistochemical analysis of paraffin-embedded human breast carcinoma tissue using NFkB-p65(Phospho-Ser529) Antibody #11217(left) or the same antibody preincubated with blocking peptide(right).



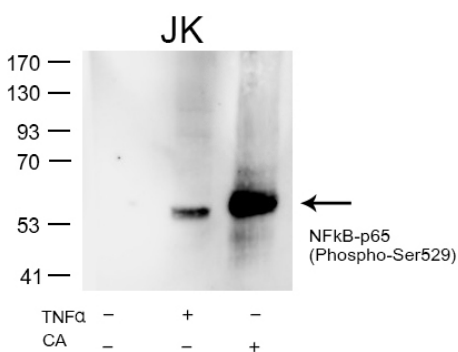
Immunofluorescence staining of methanol-fixed HeLa cells using NFkB-p65(Phospho-Ser529) Antibody #11217.



Western blot analysis of extracts from 293 cells untreated or treated with TNF-α using NFkB-p65 (Phospho-Ser529) Antibody #11217.



Western blot analysis of extracts from MCF cells, treated with TNFα+CA or calf intestinal phosphatase (CIP), using NFkB-p65 (Phospho-Ser529) Antibody #11217.



Western blot analysis of extracts from Jurkat cells untreated or treated with TNF alpha or Calyculin A, using NFkB-p65 (Phospho-Ser529) Antibody #11217.

## Background

NF-kappa-B is a pleiotropic transcription factor which is present in almost all cell types and is involved in many biological processes such as inflammation, immunity, differentiation, cell growth, tumorigenesis and apoptosis. NF-kappa-B is a homo- or heterodimeric complex formed by the Rel-like domain-containing proteins RELA/p65, RELB, NFKB1/p105, NFKB1/p50, REL and NFKB2/p52 and the heterodimeric p65-p50 complex appears to be most abundant one. The dimers bind at kappa-B sites in the DNA of their target genes and the individual dimers have distinct preferences for different kappa-B sites that they can bind with distinguishable affinity and specificity. Different dimer combinations act as transcriptional activators or repressors, respectively. NF-kappa-B is controlled by various mechanisms of post-translational modification and subcellular compartmentalization as well as by interactions with other cofactors or corepressors. NF-kappa-B complexes are held in the cytoplasm in an inactive state complexed with members of the NF-kappa-B inhibitor (I-kappa-B) family. In a conventional activation pathway, I-kappa-B is phosphorylated by I-kappa-B kinases (IKKs) in response to different activators, subsequently degraded thus liberating the active NF-kappa-B complex which translocates to the nucleus. NF-kappa-B heterodimeric p65-p50 and p65-c-Rel complexes are transcriptional activators. The NF-kappa-B p65-p65 complex appears to be involved in invasion-mediated activation of IL-8 expression. The inhibitory effect of I-kappa-B upon NF-kappa-B in the cytoplasm is exerted primarily through the interaction with p65. p65 shows a weak DNA-binding site which could contribute directly to DNA binding in the NF-kappa-B complex.

Xu C, et al (2005) *Oncogene*:24(28): 4486-95.

McNulty SE, et al. (2004) *Pigment Cell Res* Apr; 17(2): 173-80.

Madrid LV, et al. (2001) *J Biol Chem*: 276(22): 18934-40.

Wang D, et al. (2000) *J Biol Chem* : 275(42): 32592-7.

---

Note: This product is for in vitro research use only