

## ABCG2 Rabbit Polyclonal Antibody

Catalog No: #29698

Package Size: #29698-1 50ul #29698-2 100ul

Orders: order@signalwayantibody.com

Support: tech@signalwayantibody.com

## Description

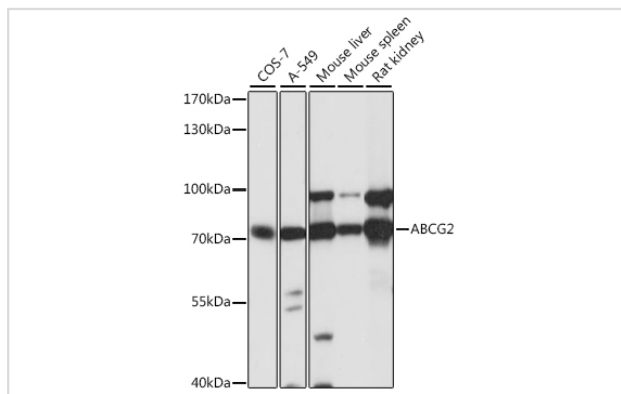
Product Name	ABCG2 Rabbit Polyclonal Antibody
Host Species	Rabbit
Clonality	Polyclonal
Isotype	IgG
Purification	Affinity purification
Applications	WB IF
Species Reactivity	Human,Mouse,Rat
Immunogen Description	Recombinant fusion protein of human ABCG2 (NP_004818.2).
Other Names	ABC15;ABCP;BCRP;BCRP1;BMDP;CD338;CDw338;EST157481;GOUT1;MRX;MXR;MXR-1;MXR1;UAQTL1; ABCG2
Accession No.	Swiss Prot:Q9UNQ0GenID:9429
Calculated MW	67kDa/72kDa
SDS-PAGE MW	72kDa
Formulation	Buffer: PBS with 0.02% sodium azide,50% glycerol,pH7.3.
Storage	Store at -20°C. Avoid freeze / thaw cycles.

## Application Details

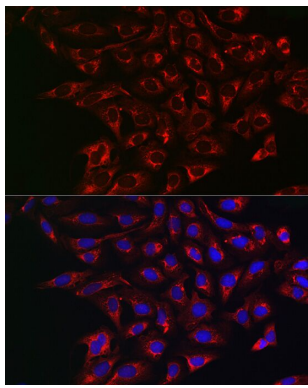
WB □ 1:500 - 1:2000

IF 1:50 - 1:200

## Images



Western blot analysis of extracts of various cell lines, using ABCG2 at 1:1000 dilution.



Immunofluorescence analysis of U2OS cells using ABCG2 Rabbit pAb at dilution of 1:250 (40x lens).

## Background

The membrane-associated protein encoded by this gene is included in the superfamily of ATP-binding cassette (ABC) transporters. ABC proteins transport various molecules across extra- and intra-cellular membranes. ABC genes are divided into seven distinct subfamilies (ABC1, MDR/TAP, MRP, ALD, OABP, GCN20, White). This protein is a member of the White subfamily. Alternatively referred to as a breast cancer resistance protein, this protein functions as a xenobiotic transporter which may play a major role in multi-drug resistance. It likely serves as a cellular defense mechanism in response to mitoxantrone and anthracycline exposure. Significant expression of this protein has been observed in the placenta, which may suggest a potential role for this molecule in placenta tissue. Multiple transcript variants encoding different isoforms have been found for this gene.

Note: This product is for in vitro research use only