

Bcl-2 Antibody

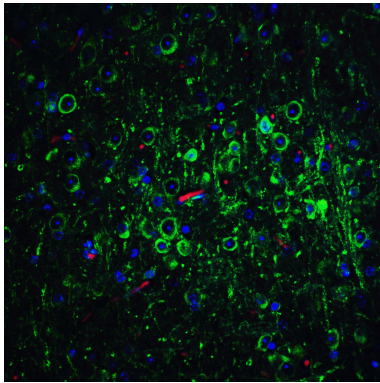
Catalog No: #24245

Orders: order@signalwayantibody.comSupport: tech@signalwayantibody.com

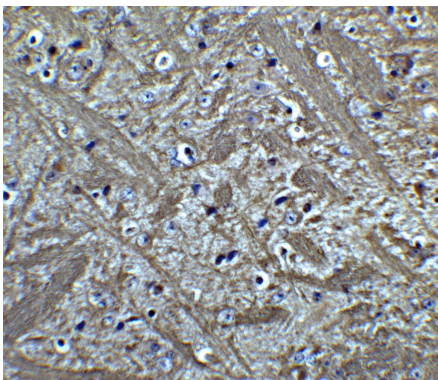
Description

| | |
|-----------------------|-------------------------------------------------------------------------------------------------------------------------------------------------------------------------------------------------|
| Product Name | Bcl-2 Antibody |
| Host Species | Rabbit |
| Clonality | Polyclonal |
| Purification | Bcl-2 Antibody is affinity chromatography purified via peptide column. |
| Applications | ELISA WB IHC |
| Species Reactivity | Hu Ms Rt |
| Immunogen Type | Peptide |
| Immunogen Description | Raised against a peptide corresponding to 15 amino acids near the N terminus of human Bcl-2. |
| Target Name | Bcl-2 |
| Accession No. | Swiss-Prot:P10415Gene ID:596 |
| Uniprot | P10415 |
| GeneID | 596; |
| Concentration | 1mg/ml |
| Formulation | Supplied in PBS containing 0.02% sodium azide. |
| Storage | Can be stored at -20°C, stable for one year. As with all antibodies care should be taken to avoid repeated freeze thaw cycles. Antibodies should not be exposed to prolonged high temperatures. |

Images



Immunofluorescence of Bcl 2 in mouse brain tissue with Bcl 2 Antibody at 20 µg/mL.



Immunohistochemistry of Bcl 2 in mouse brain tissue with Bcl 2 Antibody at 5 µg/mL.

Background

Apoptosis plays a major role in normal organism development, tissue homeostasis, and removal of damaged cells. Disruption of this process has been implicated in a variety of diseases such as cancer. Bcl-2 is the founding member of a family of over 20 proteins that are critical regulators of apoptosis. These can be divided into two classes: those that inhibit apoptosis and those that promote cell death. Bcl-2 is an inner mitochondrial membrane protein that inhibits apoptosis. It is thought to act by interacting with pro-apoptotic Bcl-2 family members such as Bak and Bad. Overexpression of Bcl-2 has been linked to human cancers such as B-cell lymphoma and prostate cancer.

Note: This product is for in vitro research use only