

## Bid Antibody

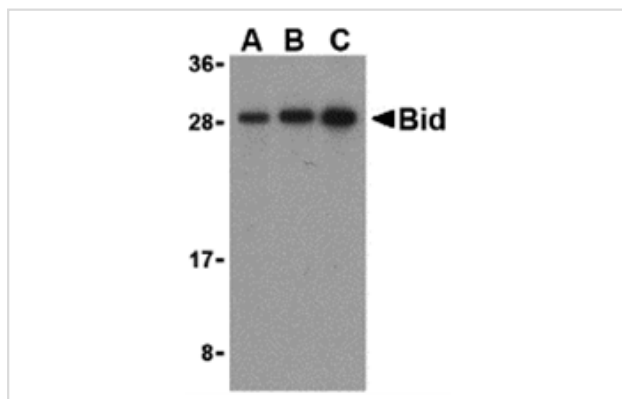
Catalog No: #24251

Orders: [order@signalwayantibody.com](mailto:order@signalwayantibody.com)Support: [tech@signalwayantibody.com](mailto:tech@signalwayantibody.com)

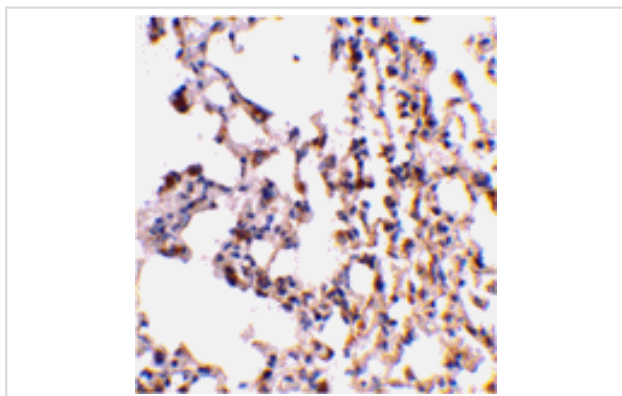
## Description

Product Name	Bid Antibody
Host Species	Rabbit
Clonality	Polyclonal
Purification	Ion exchange chromatography purified
Applications	ELISA WB IHC
Species Reactivity	Hu Ms
Immunogen Type	Peptide
Immunogen Description	Raised against a peptide corresponding to 14 amino acids near the carboxy terminus of human Bid.
Target Name	Bid
Accession No.	Swiss-Prot:P55957Gene ID:637
Uniprot	P55957
GeneID	637;
Concentration	1mg/ml
Formulation	Supplied in PBS containing 0.02% sodium azide.
Storage	Can be stored at -20°C, stable for one year. As with all antibodies care should be taken to avoid repeated freeze thaw cycles. Antibodies should not be exposed to prolonged high temperatures.

## Images



Western blot analysis of Bid in mouse lung cell lysates with Bid antibody at (A) 0.5, (B) 1, and (C) 2 ug/mL.



Immunohistochemical staining of mouse lung tissue using Bid antibody at 2 ug/mL.

## Background

---

Apoptosis plays a major role in normal organism development, tissue homeostasis, and removal of damaged cells. Disruption of this process has been implicated in a variety of diseases such as cancer. The Bcl-2 family of proteins is comprised of critical regulators of apoptosis that can be divided into two classes: those that inhibit apoptosis and those that promote cell death. Bid, a pro-apoptotic Bcl-2 family member, is cleaved by caspase-8 in response to apoptotic signals, exposing the Bcl-2 homology 3 (BH3) domain which is normally buried in the full-length protein. The cleaved complex is myristoylated and translocated to the mitochondrial membrane where it may induce mitochondrial Bax and Bak to oligomerize.

---

Note: This product is for in vitro research use only