

## Stat5 (phospho Tyr694/699) Polyclonal Antibody

Catalog No: #13503

Package Size: #13503-1 50ul #13503-2 100ul

Orders: order@signalwayantibody.com

Support: tech@signalwayantibody.com

## Description

|                       |  |
|-----------------------|--|
| Product Name          | Stat5 (phospho Tyr694/699) Polyclonal Antibody   |
| Host Species          | Rabbit   |
| Purification          | The antibody was affinity-purified from rabbit antiserum by affinity-chromatography using epitope-specific immunogen.                        |
| Applications          | WB,IHC-p,IF(paraffin section),ELISA  |
| Species Reactivity    | Human,Mouse,Rat  |
| Specificity           | Phospho-Stat5 (Y694/699) Polyclonal Antibody detects endogenous levels of Stat5 protein only when phosphorylated at Y694/699.                |
| Immunogen Description | The antiserum was produced against synthesized peptide derived from human STAT5A around the phosphorylation site of Tyr694. AA range:666-715 |
| Other Names           | STAT5A; STAT5; Signal transducer and activator of transcription 5A; STAT5B; Signal transducer and activator of transcription 5B              |
| Accession No.         | Swiss Prot:P42229/P51692GenelD:6776/6777   |
| Uniprot               | P42229/P51692  |
| GenelD                | 6776/6777  |
| SDS-PAGE MW           | 91   |
| Concentration         | 1 mg/ml  |
| Formulation           | Liquid in PBS containing 50% glycerol, 0.5% BSA and 0.02% sodium azide.  |
| Storage               | -20°C/1  |

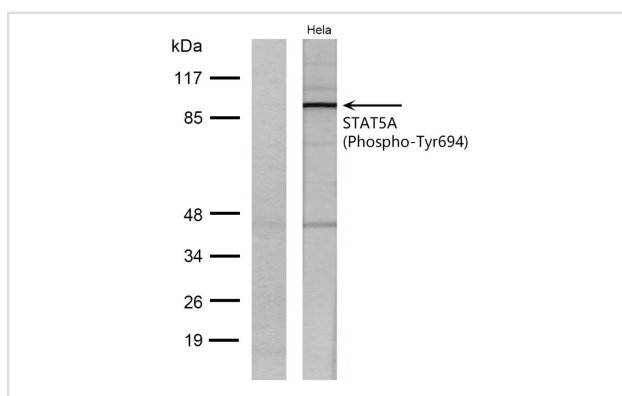
## Application Details

Western Blot: 1/500 - 1/2000.

Immunohistochemistry: 1/100 - 1/300.

ELISA: 1/20000. Not yet tested in other applications.

## Images



Western blot analysis of lysates from HeLa cells treated with EGF, using STAT5A (Phospho-Tyr694) Antibody.

## Background

---

signal transducer and activator of transcription 5A(STAT5A) Homo sapiens The protein encoded by this gene is a member of the STAT family of transcription factors. In response to cytokines and growth factors, STAT family members are phosphorylated by the receptor associated kinases, and then form homo- or heterodimers that translocate to the cell nucleus where they act as transcription activators. This protein is activated by, and mediates the responses of many cell ligands, such as IL2, IL3, IL7 GM-CSF, erythropoietin, thrombopoietin, and different growth hormones. Activation of this protein in myeloma and lymphoma associated with a TEL/JAK2 gene fusion is independent of cell stimulus and has been shown to be essential for tumorigenesis. The mouse counterpart of this gene is found to induce the expression of BCL2L1/BCL-X(L), which suggests the antiapoptotic function of this gene in cells. Alternatively spliced transcript variants have been

---

Note: This product is for in vitro research use only