

IGF-I Receptor  $\beta$  (phospho-Tyr1135) rabbit pAb

Catalog No: #13809

Package Size: #13809-1 50ul #13809-2 100ul

Orders: order@signalwayantibody.com

Support: tech@signalwayantibody.com

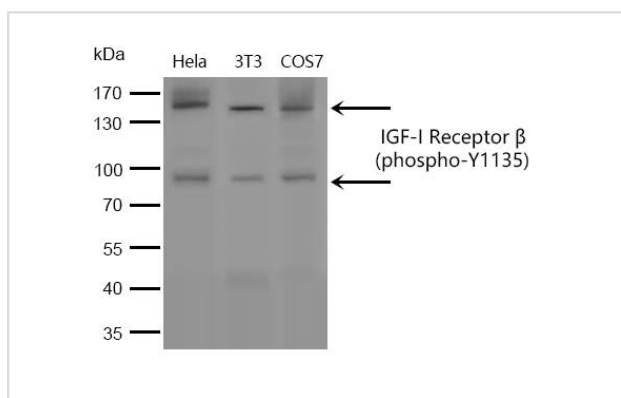
## Description

Product Name	IGF-I Receptor $\beta$ (phospho-Tyr1135) rabbit pAb
Host Species	Rabbit
Purification	The antibody was affinity-purified from rabbit serum by affinity-chromatography using specific immunogen.
Applications	WB
Species Reactivity	Human,Mouse
Specificity	This antibody detects endogenous levels of Human Mouse IGF-I Receptor $\beta$ (phospho-Tyr1135)
Immunogen Description	Synthesized phospho peptide around human IGF-I Receptor $\beta$ (Tyr1135)
Other Names	Insulin-like growth factor 1 receptor (EC 2.7.10.1) (Insulin-like growth factor I receptor) (IGF-I receptor) (CD antigen CD221) [Cleaved into: Insulin-like growth factor 1 receptor alpha chain; Insulin-like growth factor 1 receptor beta chain]
Accession No.	Swiss Prot:P08069GeneID:3480
Uniprot	P08069
GeneID	3480
SDS-PAGE MW	155
Concentration	1 mg/ml
Formulation	Liquid in PBS containing 50% glycerol, 0.5% BSA and 0.02% sodium azide.
Storage	-20°C/1

## Application Details

WB 1:1000-2000

## Images



Western blot analysis of extracts from HeLa/3T3/cos7, using IGF-I Receptor  $\beta$  (phospho-Y1135) Antibody.

## Background

insulin like growth factor 1 receptor(IGF1R) Homo sapiens This receptor binds insulin-like growth factor with a high affinity. It has tyrosine kinase activity. The insulin-like growth factor I receptor plays a critical role in transformation events. Cleavage of the precursor generates alpha and beta

subunits. It is highly overexpressed in most malignant tissues where it functions as an anti-apoptotic agent by enhancing cell survival. Alternatively spliced transcript variants encoding distinct isoforms have been found for this gene. [provided by RefSeq, May 2014],

---

Note: This product is for in vitro research use only