

# Anti-PD-1 (pembrolizumab biosimilar) mAb

Catalog No: #29606

Package Size: #29606-1 50ug #29606-2 100ug

Orders: [order@signalwayantibody.com](mailto:order@signalwayantibody.com)

Support: [tech@signalwayantibody.com](mailto:tech@signalwayantibody.com)

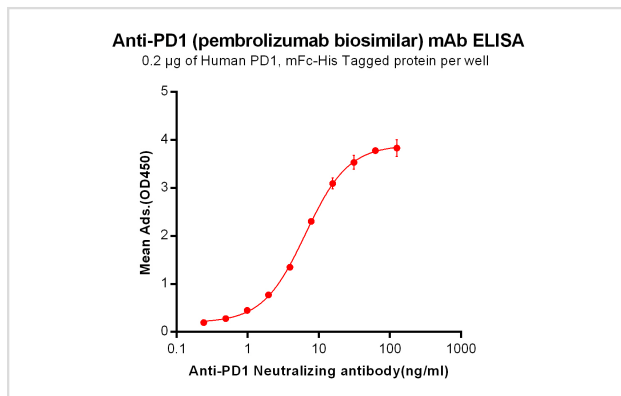
## Description

Product Name	Anti-PD-1 (pembrolizumab biosimilar) mAb
Host Species	Humanized
Clonality	Monoclonal
Isotype	IgG4
Purification	Purified from cell culture supernatant by affinity chromatography
Applications	ELISA, Flow Cyt
Species Reactivity	Human
Other Names	PDCD1, PD1, CD279, SLEB2
Formulation	Preservative: 0.1% Procline 300 Constituents: 50% Glycerol; PBS, pH 7.4; 0.1% BSA
Storage	Store at -20°C (Avoid repeated freezing and thawing)

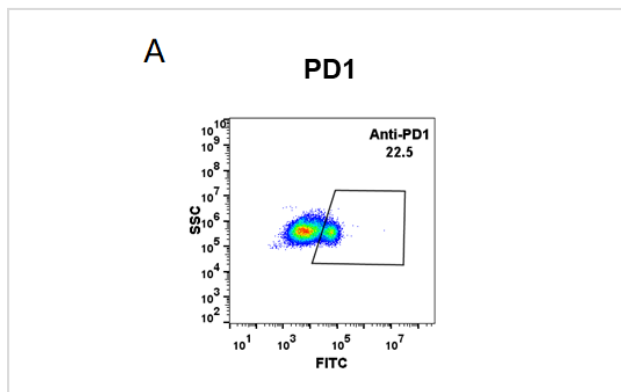
## Application Details

ELISA 1:5000-10000 Flow Cyt 1:100

## Images



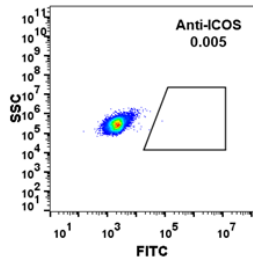
ELISA plate pre-coated by 2 µg/ml (100 µl/well) Human PD1, mFc-His tagged protein can bind Anti-PD-1 Neutralizing antibody in a linear range of 0.24-6.49 ng/ml.



HEK293 cell line transfected with irrelevant protein (B) and human PD1(A) were surface stained with anti-PD1 neutralizing antibody 1µg/ml (pembrolizumab) followed by Alexa 488-conjugated anti-rabbit IgG secondary antibody.

B

### Irrelevant Protein



## Product Description

Format: Liquid

Note: This product is for in vitro research use only