

## Anti-His Tag Antibody(DM1), Rabbit mAb

Catalog No: #29617

Package Size: #29617-1 10ug #29617-2 100ug

Orders: order@signalwayantibody.com

Support: tech@signalwayantibody.com

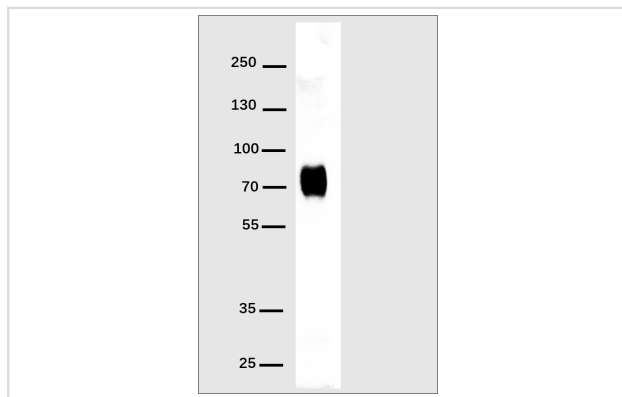
## Description

Product Name	Anti-His Tag Antibody(DM1), Rabbit mAb
Host Species	Rabbit
Clone No.	DM1
Isotype	Rabbit IgG
Purification	Purified from cell culture supernatant by affinity chromatography
Applications	WB, ELISA
Species Reactivity	His tags localized at the amino- or carboxyl?terminus.
Immunogen Description	6X His synthetic peptide coupled to KLH
Other Names	his tag
Calculated MW	70 kDa
Formulation	Lyophilized from sterile PBS, pH 7.4. Normally 5 % $\beta$ 8% trehalose is added as protectants before lyophilization.
Storage	Store at -20°C for 12 months (Avoid repeated freezing and thawing)

## Application Details

WB 1/1000

## Images



Western blot analysis of his-tag fusion protein using His-Tag antibody at 1:1000 dilution. Secondary antibody: HRP Goat Anti-Rabbit IgG (H+L) at 1:5000 dilution. His-tag fusion protein : 70kDa, 20ng per lane. Blocking buffer: 5% nonfat dry milk in TBST. Exposure time: 1s.

## Product Description

Format: Liquid

## Background

The rabbit immune system generates antibody diversity and optimizes affinity. Anti-His Tag Antibody(DM1), Rabbit mAb is specific to six histidine tags placed at C-terminal and internal regions of fusion proteins. This antibody can greatly improve the effectiveness of several different kinds

of immunoassays, helping researchers identify, detect, and purify polyhistidine fusion proteins in bacteria, insect cells, and mammalian cells.

---

Note: This product is for in vitro research use only