

Human CS1 Protein, hFc-His Tag

Catalog No: #AP89529



Package Size: #AP89529-1 10ug #AP89529-2 100ug

Orders: order@signalwayantibody.com

Support: tech@signalwayantibody.com

Description

Product Name	Human CS1 Protein, hFc-His Tag
Host Species	HEK293
Purification	The purity of the protein is greater than 95% as determined by SDS-PAGE and Coomassie blue staining.
Species Reactivity	Human
Immunogen Description	CS1(Ser23-Met226)+hFc(Glu99-Ala330)+6xHis tag
Other Names	SLAMF7, CD319, CS1, CRACC, 19A, FOAP-12
Calculated MW	70 kDa
Tag Info	C-Human Fc and 6xHis tag
Formulation	Lyophilized from sterile PBS, pH 7.4. Normally 5 % - 9 % trehalose is added as protectants before lyophilization.
Storage	Store at -80°C for 12 months (Avoid repeated freezing and thawing)

Images

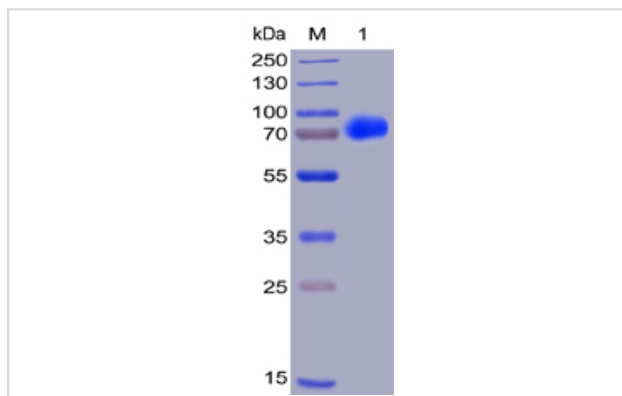


Figure 1. Human CS1, hFc-His Tag on SDS-PAGE under reducing condition.

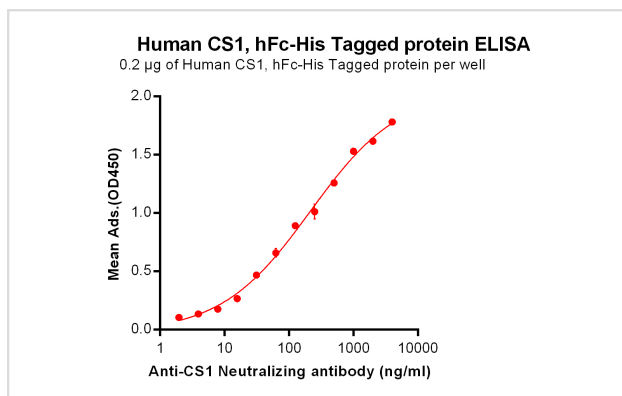


Figure 2. ELISA plate pre-coated by 2 µg/ml (100 µl/well) Human CS1, hFc-His tagged protein can bind Anti-CS1 Neutralizing antibody in a linear range of 7.81-210.7 ng/ml.



Product Description

Expression Region:710Research Topic:SLAM family member 7 (SLAMF7) is also known as CD2-like receptor-activating cytotoxic cells (CRACC), Membrane protein FOAP-12, CD antigen CD319, Novel Ly9, Protein 19A, which is a single-pass type I membrane protein and a member of the CD2 family of cell surface receptors. SLAMF7 is expressed in spleen, lymph node, peripheral blood leukocytes, bone marrow, small intestine, stomach, appendix, lung and trachea. Isoform 1 of SLAMF7 mediates NK cell activation through a SH2D1A-independent extracellular signal-regulated ERK-mediated pathway. May play a role in lymphocyte adhesion. Isoform 3 of SLAMF7 does not mediate any NK cell activation.

Note: This product is for in vitro research use only