

Human CD22 Protein, hFc-His Tag

Catalog No: #AP89532

Package Size: #AP89532-1 10ug #AP89532-2 100ug

Orders: order@signalwayantibody.com

Support: tech@signalwayantibody.com

Description

Product Name	Human CD22 Protein, hFc-His Tag
Host Species	HEK293
Purification	The purity of the protein is greater than 95% as determined by SDS-PAGE and Coomassie blue staining.
Species Reactivity	Human
Immunogen Description	CD22(Asp20-Arg687)+hFc(Glu99-Ala330)+6xHis tag
Other Names	CD22, SIGLEC2, BL-CAM, SIGLEC-2, Siglec2, SIGLEC2FLJ22814
Calculated MW	130-135 kDa
Tag Info	C-Human Fc and 6xHis tag
Formulation	Lyophilized from sterile PBS, pH 7.4. Normally 5% - 12% trehalose is added as protectants before lyophilization.
Storage	Store at -80°C for 12 months (Avoid repeated freezing and thawing)

Images

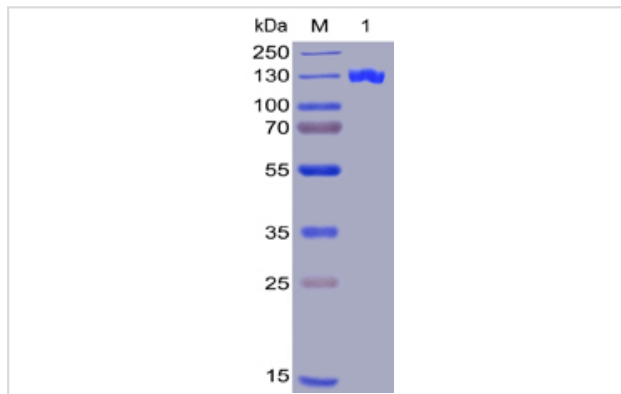


Figure 1. Human CD22, hFc-His Tag on SDS-PAGE under reducing condition.



Product Description

Expression Region: 710 Research Topic: B-cell receptor CD22 is also known as Sialic acid-binding Ig-like lectin 2 (Siglec-2), B-lymphocyte cell adhesion molecule (BL-CAM), T-cell surface antigen Leu-14, which belongs to the immunoglobulin superfamily and SIGLEC (sialic acid binding Ig-like lectin)

family. CD22 mediates B-cell B-cell interactions, and may be involved in the localization of B-cells in lymphoid tissues. Siglec-2 / CD22 binds sialylated glycoproteins, one of which is CD45. Siglec2 / CD22 plays a role in positive regulation through interaction with Src family tyrosine kinases and may also act as an inhibitory receptor by recruiting cytoplasmic phosphatases via their SH2 domains that block signal transduction through dephosphorylation of signaling molecules.

Note: This product is for in vitro research use only