

Human CD138 Protein, hFc-His Tag

Catalog No: #AP89533

Package Size: #AP89533-1 10ug #AP89533-2 100ug

Orders: order@signalwayantibody.com

Support: tech@signalwayantibody.com

Description

Product Name	Human CD138 Protein, hFc-His Tag
Host Species	HEK293
Purification	The purity of the protein is greater than 95% as determined by SDS-PAGE and Coomassie blue staining.
Species Reactivity	Human
Immunogen Description	CD138(Gln23-Gly254)+hFc(Glu99-Ala330)+6xHis tag
Other Names	SDC1, Syndecan-1, CD138, SYND1, SDC
Calculated MW	85-93 kDa
Tag Info	C-Human Fc and 6xHis tag
Formulation	Lyophilized from sterile PBS, pH 7.4. Normally 5 % - 13 % trehalose is added as protectants before lyophilization.
Storage	Store at -80°C for 12 months (Avoid repeated freezing and thawing)

Images

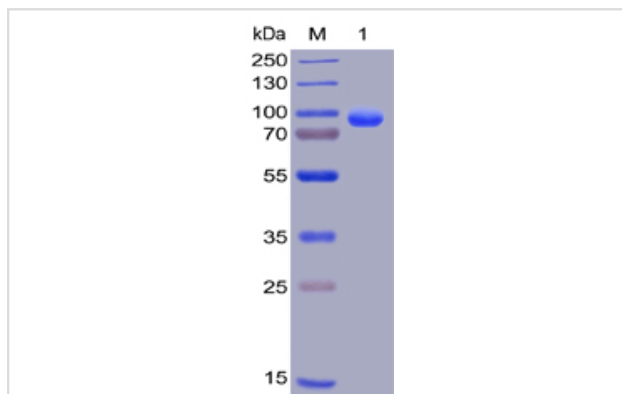
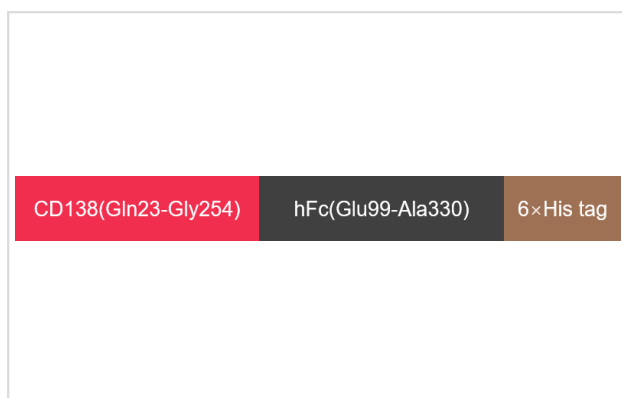


Figure 1. Human CD138, hFc-His Tag on SDS-PAGE under reducing condition.



Product Description

Expression Region:710Research Topic:Syndecan-1 (SYND1 or SDC1) is also known as CD antigen CD138, is a transmembrane (type I) heparan sulfate proteoglycan and is a member of the syndecan proteoglycan family. The syndecans mediate cell binding, cell signaling, and cytoskeletal

organization and syndecan receptors are required for internalization of the HIV-1 tat protein. The syndecan-1 / SDC1 protein functions as an integral membrane protein and participates in cell proliferation, cell migration and cell-matrix interactions via its receptor for extracellular matrix proteins. It is a useful marker for plasma cells, but only if the cells tested are already known to be derived from blood.

Note: This product is for in vitro research use only