

Human CTLA-4 Protein, mFc-His Tag

Catalog No: #AP89544



Package Size: #AP89544-1 10ug #AP89544-2 100ug

Orders: order@signalwayantibody.com

Support: tech@signalwayantibody.com

Description

Product Name	Human CTLA-4 Protein, mFc-His Tag
Host Species	HEK293
Purification	The purity of the protein is greater than 95% as determined by SDS-PAGE and Coomassie blue staining.
Species Reactivity	Human
Immunogen Description	CTLA-4(Gln36-Ser161)+mFc(Pro99-Lys330)+6xHis
Other Names	CTLA4, CD152
Calculated MW	54 kDa
Tag Info	C-Mouse Fc and 6xHis tag
Formulation	Lyophilized from sterile PBS, pH 7.4. Normally 5% - 24% trehalose is added as protectants before lyophilization.
Storage	Store at -80°C for 12 months (Avoid repeated freezing and thawing)

Images

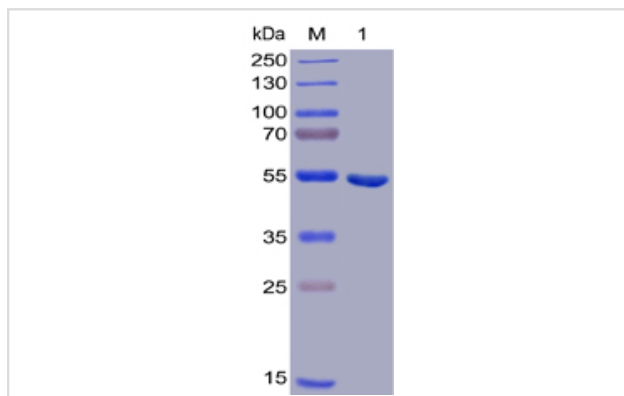


Figure 1. Human CTLA-4 Protein, mFc-His Tag on SDS-PAGE under reducing condition.

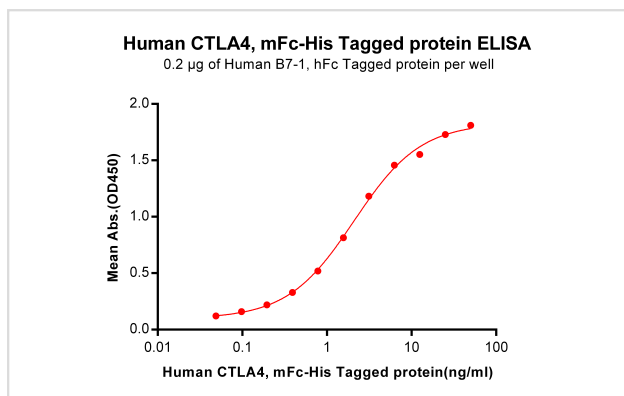


Figure 2. ELISA plate pre-coated by 2 µg/ml (100 µl/well) Human B7-1, hFc tagged protein can bind Human CTLA4, mFc-His tagged protein in a linear range of 0.048-2.094 ng/ml.

Human CTLA4, mFc-His Tagged protein ELISA

0.2 µg of Human B7-1, hFc Tagged protein per well

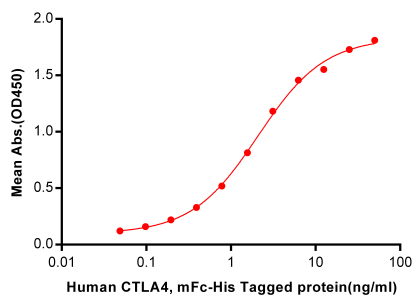


Figure 3. ELISA plate pre-coated by 2 µg/ml (100 µl/well) Human B7-2, hFc tagged protein can bind Human CTLA4, mFc-His tagged protein in a linear range of 0.048-2.694 ng/ml.

CTLA-4(Gln36-Ser161)

mFc(Pro99-Lys330)

6×His tag

Product Description

Expression Region:550Research Topic:This gene is a member of the immunoglobulin superfamily and encodes a protein which transmits an inhibitory signal to T cells. The protein contains a V domain, a transmembrane domain, and a cytoplasmic tail. Alternate transcriptional splice variants, encoding different isoforms, have been characterized. The membrane-bound isoform functions as a homodimer interconnected by a disulfide bond, while the soluble isoform functions as a monomer. Mutations in this gene have been associated with insulin-dependent diabetes mellitus, Graves disease, Hashimoto thyroiditis, celiac disease, systemic lupus erythematosus, thyroid-associated orbitopathy, and other autoimmune diseases.

Note: This product is for in vitro research use only