

Human TIM3 Protein, mFc-His Tag

Catalog No: #AP89557

Package Size: #AP89557-1 10ug #AP89557-2 100ug

Orders: order@signalwayantibody.com

Support: tech@signalwayantibody.com

Description

Product Name	Human TIM3 Protein, mFc-His Tag
Host Species	HEK293
Purification	The purity of the protein is greater than 95% as determined by SDS-PAGE and Coomassie blue staining.
Species Reactivity	Human
Immunogen Description	TIM3(Ser22-Gly202)+mFc(Pro99-Lys330)+6xHis tag
Other Names	HAVCR2, TIM3, TIMD3, FLJ14428, KIM3
Calculated MW	47.5 kDa
Tag Info	C-Mouse Fc and 6xHis tag
Formulation	Lyophilized from sterile PBS, pH 7.4. Normally 5% - 37% trehalose is added as protectants before lyophilization.
Storage	Store at -80°C for 12 months (Avoid repeated freezing and thawing)

Images

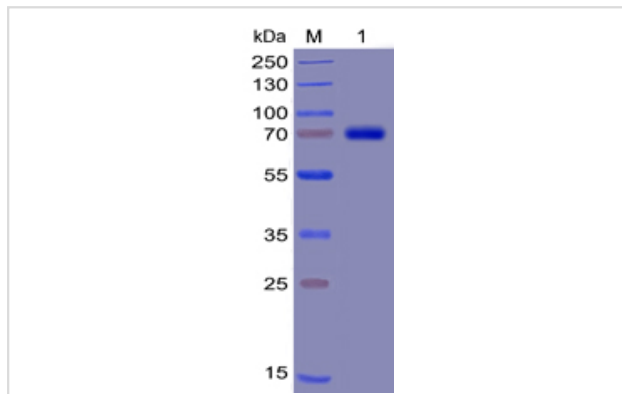


Figure 1. Human TIM3 Protein, mFc-His Tag on SDS-PAGE under reducing condition.

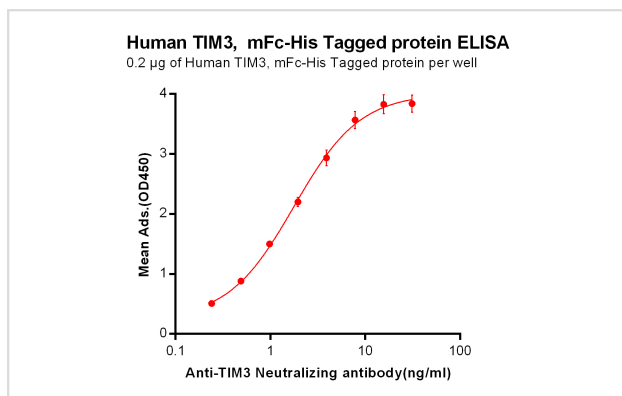


Figure 2. ELISA plate pre-coated by 2 µg/ml (100 µl/well) Human TIM3, mFc-His tagged protein can bind Anti-TIM3 Neutralizing antibody in a linear range of 0.12-6.89 ng/ml.



TIM3(Ser22-Gly202)

mFc(Pro99-Lys330)

6 × His tag

Product Description

Expression Region:710Research Topic:The protein encoded by this gene belongs to the immunoglobulin superfamily, and TIM family of proteins. CD4-positive T helper lymphocytes can be divided into types 1 (Th1) and 2 (Th2) on the basis of their cytokine secretion patterns. Th1 cells are involved in cell-mediated immunity to intracellular pathogens and delayed-type hypersensitivity reactions, whereas, Th2 cells are involved in the control of extracellular helminthic infections and the promotion of atopic and allergic diseases. This protein is a Th1-specific cell surface protein that regulates macrophage activation, and inhibits Th1-mediated auto- and alloimmune responses, and promotes immunological tolerance.

Note: This product is for in vitro research use only