

Human MSLN(296-580) Protein, mFc-His Tag

Catalog No: #AP89558

Package Size: #AP89558-1 10ug #AP89558-2 100ug

Orders: order@signalwayantibody.com

Support: tech@signalwayantibody.com

Description

Product Name	Human MSLN(296-580) Protein, mFc-His Tag
Host Species	HEK293
Purification	The purity of the protein is greater than 95% as determined by SDS-PAGE and Coomassie blue staining.
Species Reactivity	Human
Immunogen Description	MSLN(Glu296-Gly580)+mFc(Pro99-Lys330)+6xHis tag
Other Names	MSLN, Mesothelin, MPF
Calculated MW	59.3 kDa
Tag Info	C-Mouse Fc and 6xHis tag
Formulation	Lyophilized from sterile PBS, pH 7.4. Normally 5% - 38% trehalose is added as protectants before lyophilization.
Storage	Store at -80°C for 12 months (Avoid repeated freezing and thawing)

Images

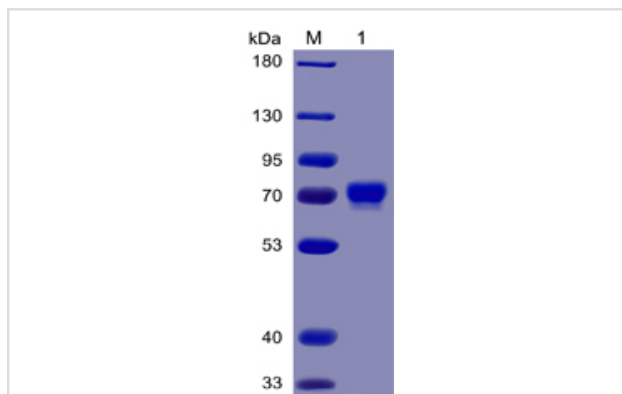
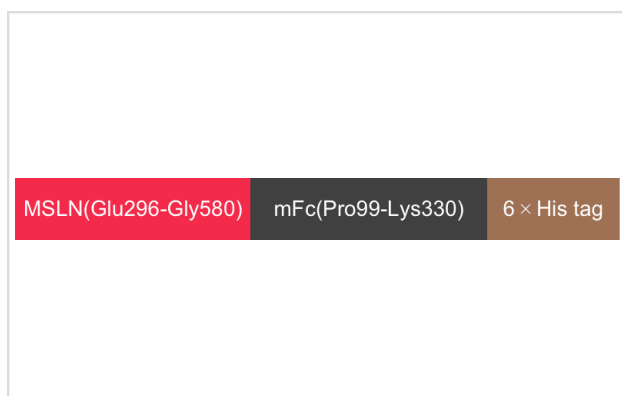


Figure 1. Human Mesothelin(296-580) Protein, mFc-His Tag on SDS-PAGE under reducing condition.



Product Description

Expression Region:600Research Topic:This gene encodes a preproprotein that is proteolytically processed to generate two protein products, megakaryocyte potentiating factor and mesothelin. Megakaryocyte potentiating factor functions as a cytokine that can stimulate colony formation of

bone marrow megakaryocytes. Mesothelin is a glycosylphosphatidylinositol-anchored cell-surface protein that may function as a cell adhesion protein. This protein is overexpressed in epithelial mesotheliomas, ovarian cancers and in specific squamous cell carcinomas. Alternative splicing results in multiple transcript variants, at least one of which encodes an isoform that is proteolytically processed.

Note: This product is for in vitro research use only