

Human IL6 Protein, mFc-His Tag

Catalog No: #AP89559

Package Size: #AP89559-1 10ug #AP89559-2 100ug

Orders: order@signalwayantibody.com

Support: tech@signalwayantibody.com

Description

Product Name	Human IL6 Protein, mFc-His Tag
Host Species	HEK293
Purification	The purity of the protein is greater than 95% as determined by SDS-PAGE and Coomassie blue staining.
Species Reactivity	Human
Immunogen Description	IL6(Val30-Met212)+mFc(Pro99-Lys330)+6≠His tag
Other Names	IL6, Interleukin-6, BSF2, HSF, IFNB2
Calculated MW	47.9 kDa
Tag Info	C-Mouse Fc and 6≠His tag
Formulation	Lyophilized from sterile PBS, pH 7.4. Normally 5 % - 39 % trehalose is added as protectants before lyophilization.
Storage	Store at -80°C for 12 months (Avoid repeated freezing and thawing)

Images

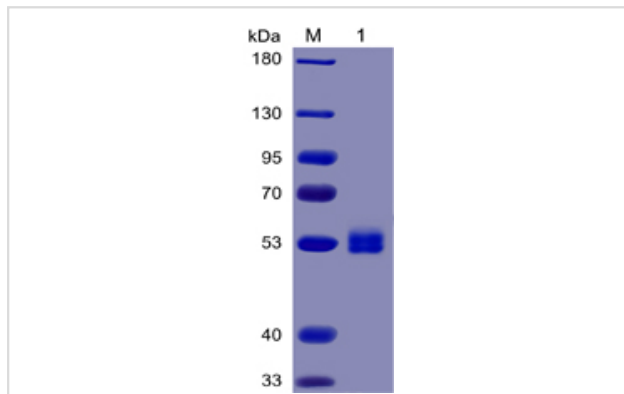


Figure 1. Human IL6 Protein, mFc-His Tag on SDS-PAGE under reducing condition.

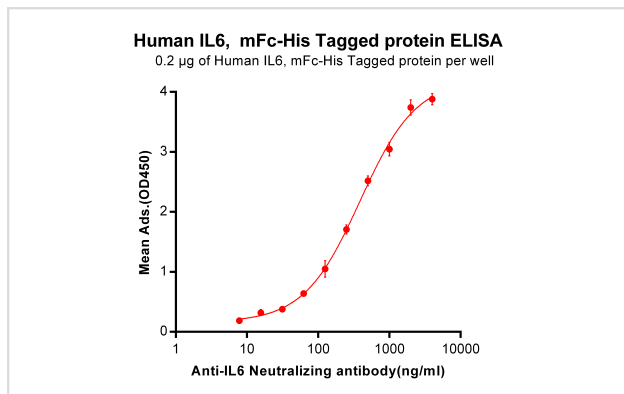


Figure 2. ELISA plate pre-coated by 2 µg/ml (100 µl/well) Human IL6, mFc-His tagged protein can bind Anti-IL6 Neutralizing antibody in a linear range of 7.81-386.8 ng/ml.



Product Description

Expression Region:710Research Topic:This gene encodes a cytokine that functions in inflammation and the maturation of B cells. In addition, the encoded protein has been shown to be an endogenous pyrogen capable of inducing fever in people with autoimmune diseases or infections. The protein is primarily produced at sites of acute and chronic inflammation, where it is secreted into the serum and induces a transcriptional inflammatory response through interleukin 6 receptor, alpha. The functioning of this gene is implicated in a wide variety of inflammation-associated disease states, including susceptibility to diabetes mellitus and systemic juvenile rheumatoid arthritis. Alternative splicing results in multiple transcript variants.

Note: This product is for in vitro research use only