

Human EPHA3 Protein, mFc-His Tag

Catalog No: #AP89566

Package Size: #AP89566-1 10ug #AP89566-2 100ug

Orders: order@signalwayantibody.com

Support: tech@signalwayantibody.com

Description

Product Name	Human EPHA3 Protein, mFc-His Tag
Host Species	HEK293
Purification	The purity of the protein is greater than 95% as determined by SDS-PAGE and Coomassie blue staining.
Species Reactivity	Human
Immunogen Description	EPHA3(Glu21-Gln541)+mFc(Pro99-Lys330)+6xHis tag
Other Names	TYRO4, HEK4, ETK1, ETK, EK4, HEK
Calculated MW	85.9 kDa
Tag Info	C-Mouse Fc and 6xHis tag
Formulation	Lyophilized from sterile PBS, pH 7.4. Normally 5% - 46% trehalose is added as protectants before lyophilization.
Storage	Store at -80°C for 12 months (Avoid repeated freezing and thawing)

Images

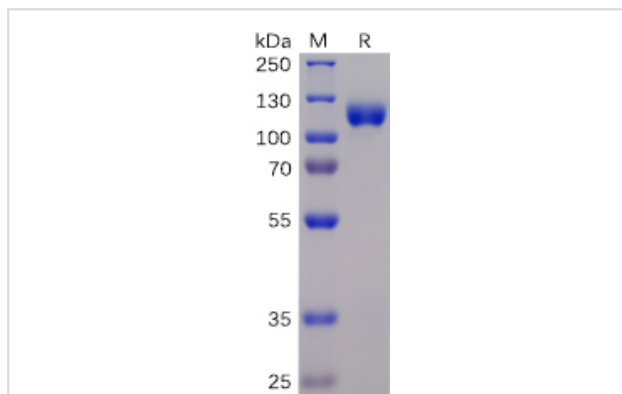


Figure 1. Human EPHA3 Protein, mFc-His Tag on SDS-PAGE under reducing condition.



Product Description

Expression Region:600Research Topic:This gene belongs to the ephrin receptor subfamily of the protein-tyrosine kinase family. EPH and EPH-related receptors have been implicated in mediating developmental events, particularly in the nervous system. Receptors in the EPH subfamily typically have

a single kinase domain and an extracellular region containing a Cys-rich domain and 2 fibronectin type III repeats. The ephrin receptors are divided into 2 groups based on the similarity of their extracellular domain sequences and their affinities for binding ephrin-A and ephrin-B ligands. This gene encodes a protein that binds ephrin-A ligands. Two alternatively spliced transcript variants have been described for this gene.

Note: This product is for in vitro research use only