

Human BTLA Protein, mFc-His Tag

Catalog No: #AP89567

Package Size: #AP89567-1 10ug #AP89567-2 100ug

Orders: order@signalwayantibody.com

Support: tech@signalwayantibody.com

Description

Product Name	Human BTLA Protein, mFc-His Tag
Host Species	HEK293
Purification	The purity of the protein is greater than 95% as determined by SDS-PAGE and Coomassie blue staining.
Species Reactivity	Human
Immunogen Description	BTLA(Lys31-Ser150)+mFc(Pro99-Lys330)+6xHis tag
Other Names	BTLA, CD272
Calculated MW	41.3 kDa
Tag Info	C-Mouse Fc and 6xHis tag
Formulation	Lyophilized from sterile PBS, pH 7.4. Normally 5% - 47% trehalose is added as protectants before lyophilization.
Storage	Store at -80°C for 12 months (Avoid repeated freezing and thawing)

Images

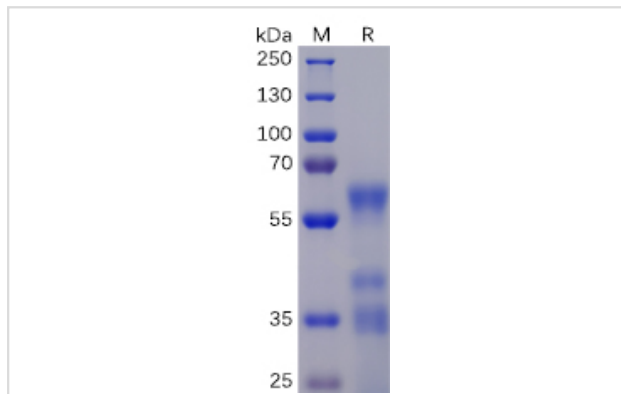


Figure 1. Human BTLA Protein, mFc-His Tag on SDS-PAGE under reducing condition.



Product Description

Expression Region:600Research Topic:This gene encodes a member of the immunoglobulin superfamily. The encoded protein contains a single immunoglobulin (Ig) domain and is a receptor that relays inhibitory signals to suppress the immune response. Alternative splicing results in multiple

transcript variants. Polymorphisms in this gene have been associated with an increased risk of rheumatoid arthritis.

Note: This product is for in vitro research use only