

Human DNAM-1 Protein, mFc-His Tag

Catalog No: #AP89568

Package Size: #AP89568-1 10ug #AP89568-2 100ug

Orders: order@signalwayantibody.com

Support: tech@signalwayantibody.com

Description

Product Name	Human DNAM-1 Protein, mFc-His Tag
Host Species	HEK293
Purification	The purity of the protein is greater than 95% as determined by SDS-PAGE and Coomassie blue staining.
Species Reactivity	Human
Immunogen Description	DNAM-1(Glu19-Asn247)+mFc(Pro99-Lys330)+6xHis tag
Other Names	DNAM1, CD226, PTA1
Calculated MW	53.5 kDa
Tag Info	C-Mouse Fc and 6xHis tag
Formulation	Lyophilized from sterile PBS, pH 7.4. Normally 5% - 48% trehalose is added as protectants before lyophilization.
Storage	Store at -80°C for 12 months (Avoid repeated freezing and thawing)

Images

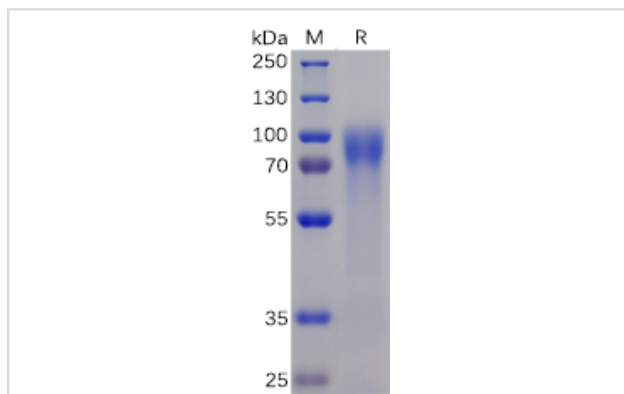


Figure 1. Human DNAM-1 Protein, mFc-His Tag on SDS-PAGE under reducing condition.

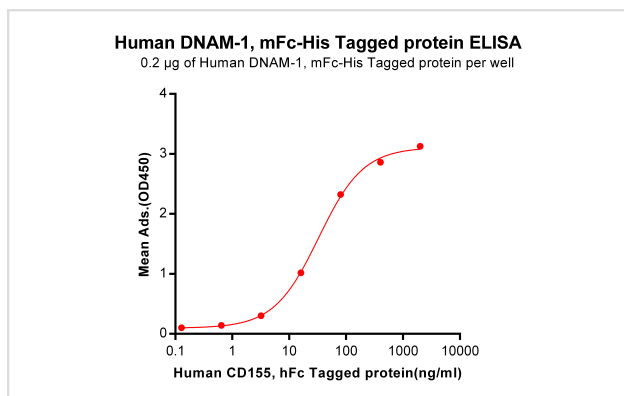


Figure 2. ELISA plate pre-coated by 2 µg/ml (100 µl/well) Human DNAM-1, mFc-His tagged protein) can bind Human CD155, hFc Tagged protein in a linear range of 0.128-32.88 ng/ml.

DNAM-1
(Glu19-Asn247)

mFc(Pro99-Lys330)

6 × His tag

Product Description

Expression Region:600Research Topic:This gene encodes a glycoprotein expressed on the surface of NK cells, platelets, monocytes and a subset of T cells. It is a member of the Ig-superfamily containing 2 Ig-like domains of the V-set. The protein mediates cellular adhesion of platelets and megakaryocytic cells to vascular endothelial cells. The protein also plays a role in megakaryocytic cell maturation. Alternative splicing results in multiple transcript variants.

Note: This product is for in vitro research use only