

Human CSF1R Protein, His Tag

Catalog No: #AP89574

Package Size: #AP89574-1 10ug #AP89574-2 100ug

Orders: order@signalwayantibody.com

Support: tech@signalwayantibody.com

Description

Product Name	Human CSF1R Protein, His Tag
Host Species	HEK293
Purification	The purity of the protein is greater than 95% as determined by SDS-PAGE and Coomassie blue staining.
Species Reactivity	Human
Immunogen Description	CSF1R(Ile20-Leu514)+6xHis tag
Other Names	CSF1R,C-FMS,CD115,CSFR,FIM2,FMS,M-CSFR
Calculated MW	55.6 kDa
Tag Info	C- 6xHis tag
Formulation	Lyophilized from sterile PBS, pH 7.4. Normally 5 % - 54 % trehalose is added as protectants before lyophilization.
Storage	Store at -80°C for 12 months (Avoid repeated freezing and thawing)

Images

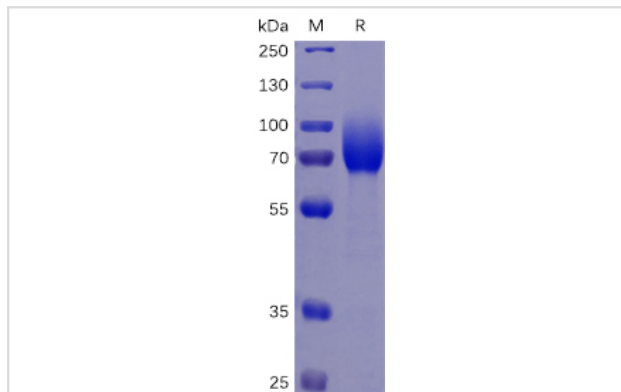
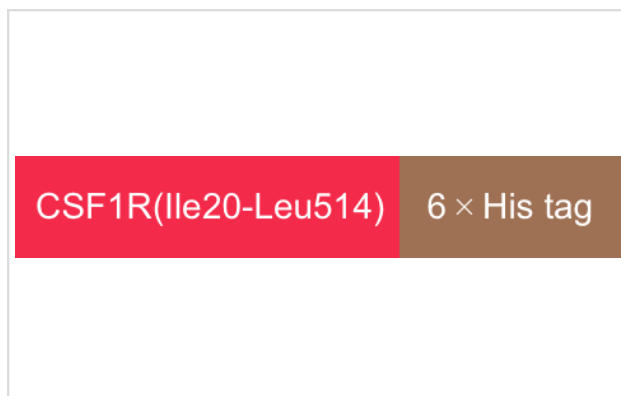


Figure 1. Human CSF1R Protein, His Tag on SDS-PAGE under reducing condition.



Product Description

Expression Region:510Research Topic:The protein encoded by this gene is the receptor for colony stimulating factor 1, a cytokine which controls the production, differentiation, and function of macrophages. This receptor mediates most if not all of the biological effects of this cytokine. Ligand binding

activates the receptor kinase through a process of oligomerization and transphosphorylation. The encoded protein is a tyrosine kinase transmembrane receptor and member of the CSF1/PDGF receptor family of tyrosine-protein kinases. Mutations in this gene have been associated with a predisposition to myeloid malignancy. The first intron of this gene contains a transcriptionally inactive ribosomal protein L7 processed pseudogene oriented in the opposite direction. Alternative splicing results in multiple transcript variants. Expression of a splice variant from an LTR promoter has been found in Hodgkin lymphoma (HL), HL cell lines and anaplastic large cell lymphoma.

Note: This product is for in vitro research use only