

Human EPCAM Protein, His Tag

Catalog No: #AP89575

Package Size: #AP89575-1 10ug #AP89575-2 100ug

Orders: order@signalwayantibody.com

Support: tech@signalwayantibody.com

Description

Product Name	Human EPCAM Protein, His Tag
Host Species	HEK293
Purification	The purity of the protein is greater than 95% as determined by SDS-PAGE and Coomassie blue staining.
Species Reactivity	Human
Immunogen Description	EPCAM(Gln24-Gly314)+6xHis tag
Other Names	EPCAM,TACSTD1,TROP1,CD326,DIAR5,EGP2,EGP314,EGP40,ESA,GA733-2,HNPCC8,HNPCC-8,KS1/4,KS2/4,SA,M4S1,MIC18,MK1
Calculated MW	28.2 kDa
Tag Info	C-6xHis tag
Formulation	Lyophilized from sterile PBS, pH 7.4. Normally 5 % - 55 % trehalose is added as protectants before lyophilization.
Storage	Store at -80°C for 12 months (Avoid repeated freezing and thawing)

Images

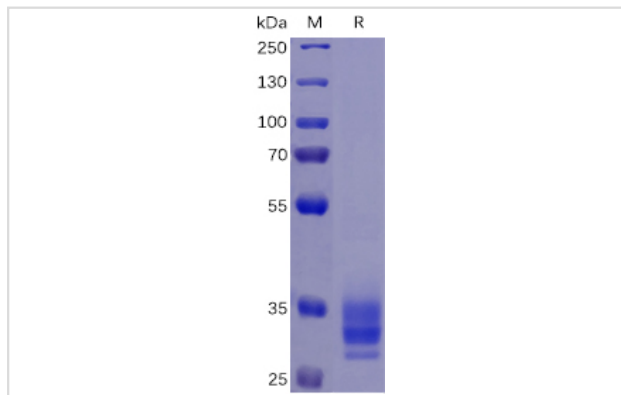
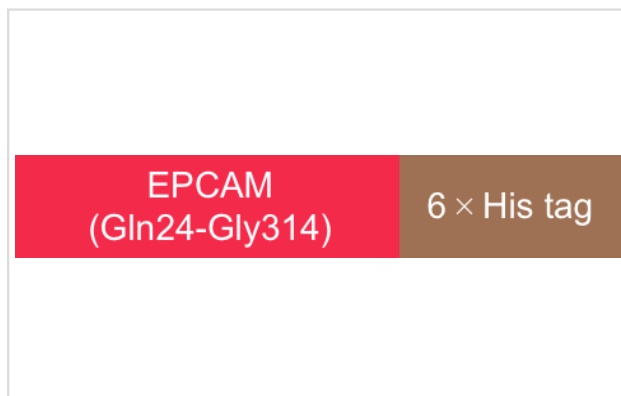


Figure 1. Human EPCAM Protein, His Tag on SDS-PAGE under reducing condition.



Product Description

Expression Region:550Research Topic:This gene encodes a carcinoma-associated antigen and is a member of a family that includes at least two type

I membrane proteins. This antigen is expressed on most normal epithelial cells and gastrointestinal carcinomas and functions as a homotypic calcium-independent cell adhesion molecule. The antigen is being used as a target for immunotherapy treatment of human carcinomas. Mutations in this gene result in congenital tufting enteropathy.

Note: This product is for in vitro research use only