

Human ACE2 Protein, mFc Tag

Catalog No: #AP89579

Package Size: #AP89579-1 10ug #AP89579-2 50ug

Orders: order@signalwayantibody.com

Support: tech@signalwayantibody.com

Description

Product Name	Human ACE2 Protein, mFc Tag
Host Species	HEK293
Purification	The purity of the protein is greater than 95% as determined by SDS-PAGE and Coomassie blue staining.
Species Reactivity	Human
Immunogen Description	ACE2(Gln18-Ser740)+mFc(Pro99-Lys330)
Other Names	ACE-2,ACEH,ACE2
Calculated MW	109.7 kDa
Tag Info	C-Mouse Fc tag
Formulation	Lyophilized from sterile PBS, pH 7.4. Normally 5 % - 59 % trehalose is added as protectants before lyophilization.
Storage	Store at -80°C for 12 months (Avoid repeated freezing and thawing)

Images

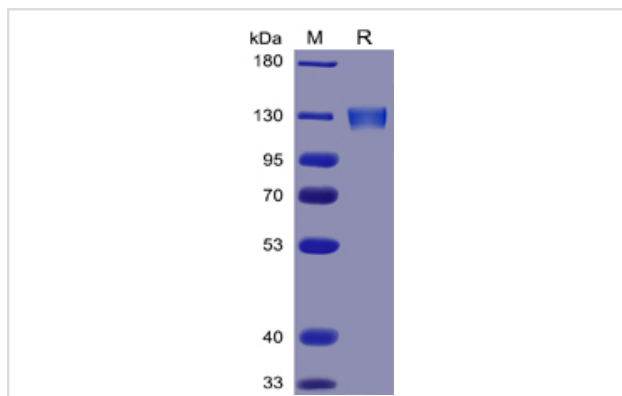


Figure 1. Human ACE2 Protein, mFc Tag on SDS-PAGE under reducing condition.

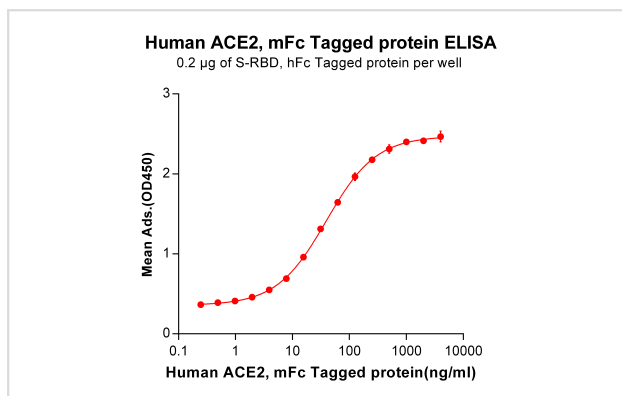


Figure 2. ELISA plate pre-coated by 2 µg/ml (100 µl/well) S-RBD, mFc tagged protein can bind Human ACE2, hFc Tagged protein in a linear range of 7.81-87.7 ng/ml.



ACE2(Gln18-Ser740)

mFc(Pro99-Lys330)

6 × His tag

Product Description

Expression Region:550Research Topic:The protein encoded by this gene belongs to the angiotensin-converting enzyme family of dipeptidyl carboxydipeptidases and has considerable homology to human angiotensin 1 converting enzyme. This secreted protein catalyzes the cleavage of angiotensin I into angiotensin 1-9, and angiotensin II into the vasodilator angiotensin 1-7. The organ- and cell-specific expression of this gene suggests that it may play a role in the regulation of cardiovascular and renal function, as well as fertility. In addition, the encoded protein is a functional receptor for the spike glycoprotein of the human coronaviruses SARS and HCoV-NL63.

Note: This product is for in vitro research use only