

## Human SELP Protein, hFc Tag

Catalog No: #AP89587

Package Size: #AP89587-1 10ug #AP89587-2 100ug

Orders: order@signalwayantibody.com

Support: tech@signalwayantibody.com

## Description

Product Name	Human SELP Protein, hFc Tag
Host Species	HEK293
Purification	The purity of the protein is greater than 95% as determined by SDS-PAGE and Coomassie blue staining.
Species Reactivity	Human
Immunogen Description	SELP(Trp42-Aal771)+hFc(Glu99-Ala330)
Other Names	P-Selectin,CD62P,SELP,GMP-140
Calculated MW	106.1 kDa
Tag Info	C-Human Fc tag
Formulation	Lyophilized from sterile PBS, pH 7.4. Normally 5 % - 67 % trehalose is added as protectants before lyophilization.
Storage	Store at -80°C for 12 months (Avoid repeated freezing and thawing)

## Images

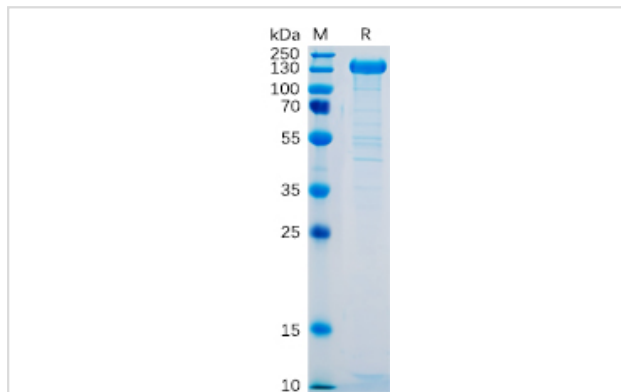
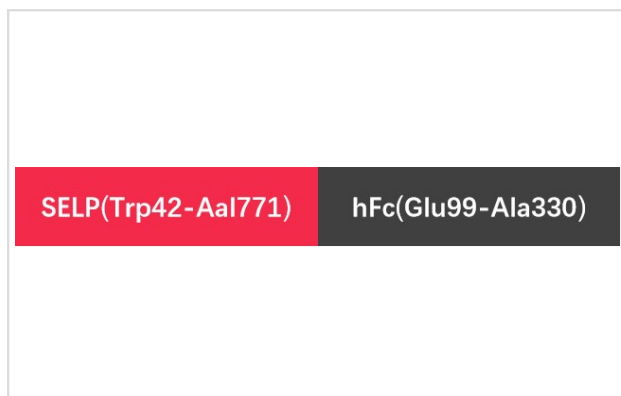


Figure 1. Human SELP Protein, hFc Tag on SDS-PAGE under reducing condition.



## Product Description

Expression Region:600Research Topic:This gene encodes a 140 kDa protein that is stored in the alpha-granules of platelets and Weibel-Palade bodies of endothelial cells. This protein redistributes to the plasma membrane during platelet activation and degranulation and mediates the interaction

of activated endothelial cells or platelets with leukocytes. The membrane protein is a calcium-dependent receptor that binds to sialylated forms of Lewis blood group carbohydrate antigens on neutrophils and monocytes. Alternative splice variants may occur but are not well documented.

---

Note: This product is for in vitro research use only