

# Human SIGLEC15 Protein, mFc-His Tag

Catalog No: #AP89589



Package Size: #AP89589-1 10ug #AP89589-2 100ug

Orders: [order@signalwayantibody.com](mailto:order@signalwayantibody.com)

Support: [tech@signalwayantibody.com](mailto:tech@signalwayantibody.com)

## Description

Product Name	Human SIGLEC15 Protein, mFc-His Tag
Host Species	HEK293
Purification	The purity of the protein is greater than 95% as determined by SDS-PAGE and Coomassie blue staining.
Species Reactivity	Human
Immunogen Description	SIGLEC15(Phe20-Thr263)+mFc(Pro99-Lys330)+6xHis tag
Other Names	CD33 antigen-like 3,SIGLEC-15,CD33L3,sialic acid-binding Ig-like lectin 15,Siglec15,Siglec-15
Calculated MW	53.6 kDa
Tag Info	C-Mouse Fc and 6xHis tag
Formulation	Lyophilized from sterile PBS, pH 7.4. Normally 5% - 69% trehalose is added as protectants before lyophilization.
Storage	Store at -80°C for 12 months (Avoid repeated freezing and thawing)

## Images

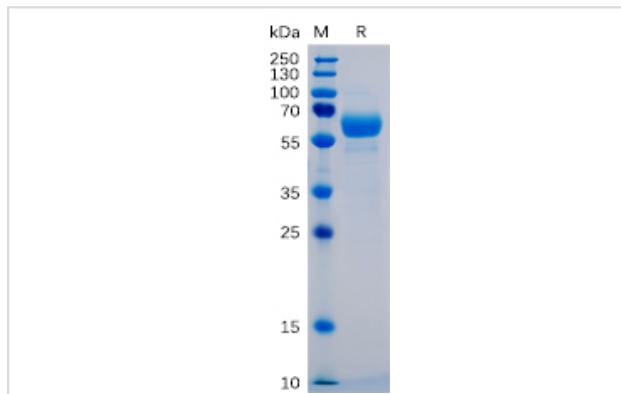


Figure 1. Human SIGLEC15 Protein, mFc-His Tag on SDS-PAGE under reducing condition.



## Product Description

Expression Region:600Research Topic:SIGLEC15 (Sialic Acid Binding Ig Like Lectin 15) is a Protein Coding gene. Diseases associated with SIGLEC15 include?Osteoporosis, Juvenile?and?Osteoporosis. Among its related pathways are?Innate Immune System?and?RET signaling. An

important paralog of this gene is?SIGLEC1.

---

Note: This product is for in vitro research use only