

# SARS-CoV-2 (2019-nCoV) S protein RBD, mFc-His Tag

Catalog No: #AP89591

Orders: [order@signalwayantibody.com](mailto:order@signalwayantibody.com)

Package Size: #AP89591-1 10ug #AP89591-2 100ug

Support: [tech@signalwayantibody.com](mailto:tech@signalwayantibody.com)

## Description

Product Name	SARS-CoV-2 (2019-nCoV) S protein RBD, mFc-His Tag
Host Species	HEK293
Purification	The purity of the protein is greater than 90% as determined by SDS-PAGE and Coomassie blue staining.
Species Reactivity	Human
Immunogen Description	S protein RBD(Arg319-Phe541)+mFc(Pro99-Lys330)+6xHis tag
Other Names	S protein RBD, Spike glycoprotein Receptor-binding domain, S glycoprotein RBD, Spike protein RBD, COVID-19
Calculated MW	52.2 kDa
Tag Info	C-Mouse Fc and 6xHis tag
Formulation	Lyophilized from sterile PBS, pH 7.4. Normally 5% - 71% trehalose is added as protectants before lyophilization.
Storage	Store at -80°C for 12 months (Avoid repeated freezing and thawing)

## Images

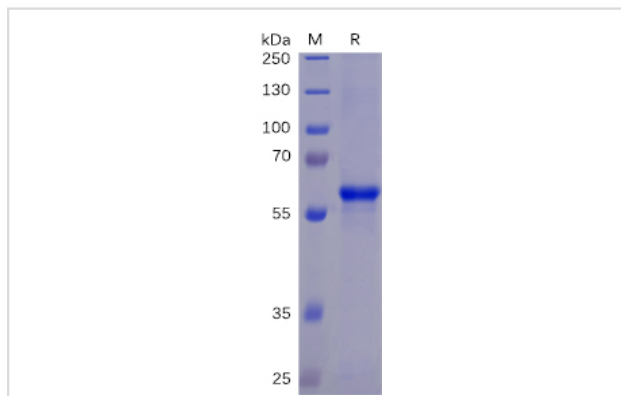


Figure 1. SARS-CoV-2 (2019-nCoV) S protein RBD, mFc-His Tag on SDS-PAGE under reducing condition.

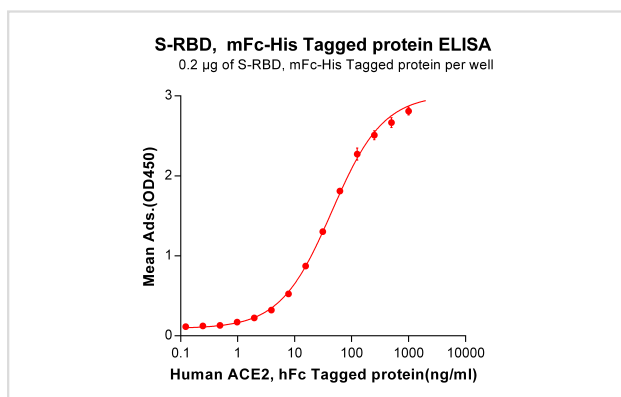


Figure 2. ELISA plate pre-coated by 2 µg/ml (100 µl/well) SARS-CoV-2 (2019-nCoV) S protein RBD, mFc-His tagged protein can bind Anti-SARS-CoV-2 S protein RBD Neutralizing Antibody in a linear range of 0.24-9.141 ng/ml.

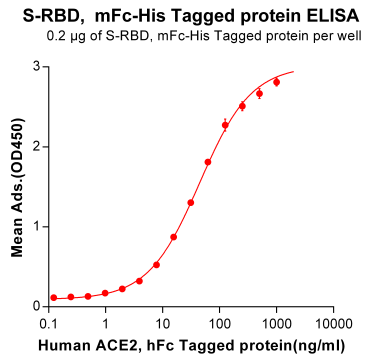


Figure 3. ELISA plate pre-coated by 2 µg/ml (100 µl/well) S-RBD, mFc-His tagged protein (PME100460) can bind Anti-SARS-CoV-2 Neutralizing antibody  $\Omega\frac{1}{2}\alpha\Omega\frac{1}{2}CB6\alpha\Omega\frac{1}{2}\alpha\Omega\frac{1}{2}$  in a linear range of 0.24-15.62 ng/ml.

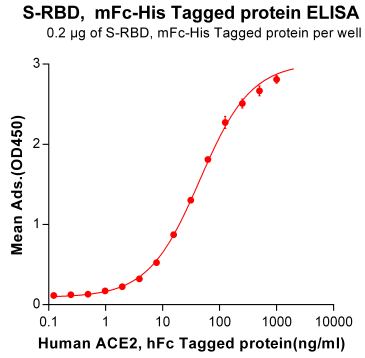


Figure 4. ELISA plate pre-coated by 2 µg/ml (100 µl/well) S-RBD, mFc-His tagged protein can bind Human ACE2, hFc Tagged protein in a linear range of 0.488-49.83 ng/ml.



## Product Description

Expression Region:710Research Topic:SARS-CoV-2 (Severe Acute Respiratory Syndrome Coronavirus 2) also known as Covid19 (2019 Novel Coronavirus) is a virus that causes illnesses ranging from the common cold to severe diseases. The spike protein is a type I transmembrane protein containing two subunits, S1 and S2. S1 mainly contains a receptor binding domain (RBD), which accounts for recognizing the cell surface receptor, ACE2. S2 contains basic elements needed for the membrane fusion. Recent publications indicate that S1-RBD domain can induce virus neutralizing-antibody and T cell response.

Note: This product is for in vitro research use only