

# Human PD-1 Protein, hFc-His tag

Catalog No: #AP89593

Package Size: #AP89593-1 10ug #AP89593-2 100ug

Orders: order@signalwayantibody.com

Support: tech@signalwayantibody.com

## Description

Product Name	Human PD-1 Protein, hFc-His tag
Host Species	HEK293
Purification	The purity of the protein is greater than 90% as determined by SDS-PAGE and Coomassie blue staining.
Species Reactivity	Human
Immunogen Description	PD-1(Leu25-Gln167)+hFc(Glu99-Ala330)+6xHis tag
Other Names	PDCD1, PD1, CD279, SLEB2
Calculated MW	42.9 kDa
Tag Info	C-Human Fc and 6xHis tag
Formulation	Lyophilized from sterile PBS, pH 7.4. Normally 5% - 73% trehalose is added as protectants before lyophilization.
Storage	Store at -80°C for 12 months (Avoid repeated freezing and thawing)

## Images

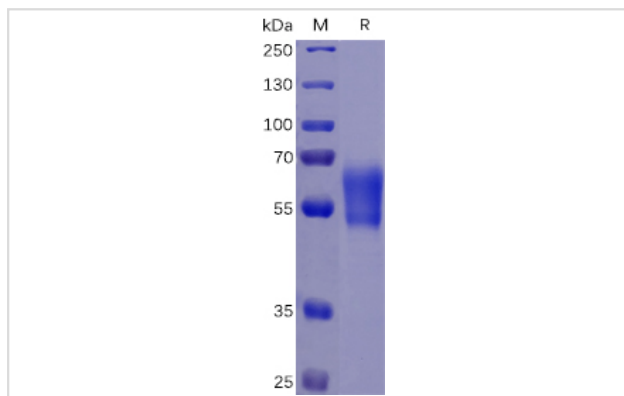


Figure 1. Human PD-1 Protein, hFc-His Tag on SDS-PAGE under reducing condition.

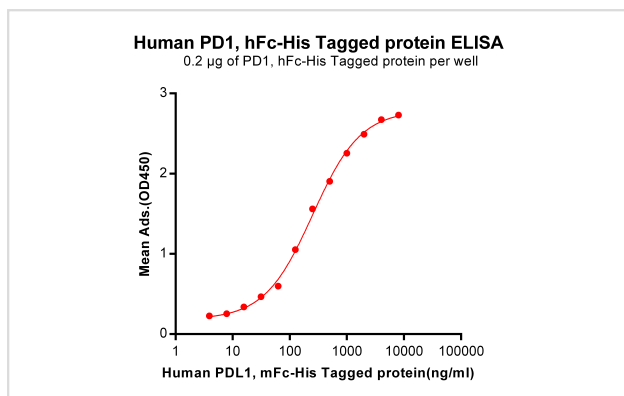
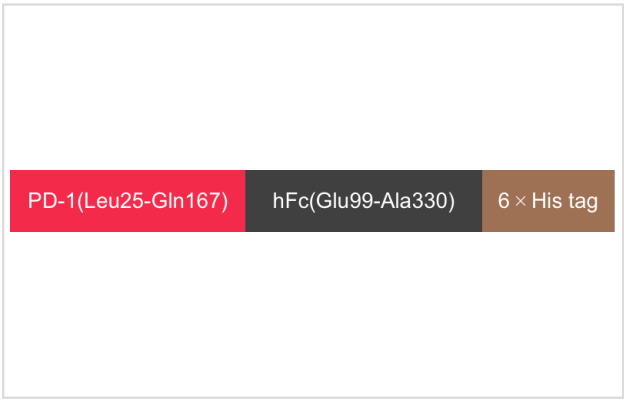


Figure 2. ELISA plate pre-coated by 2 µg/ml (100 µl/well) Human PD1, hFc-His tagged protein can bind Human PDL1, mFc-His tagged protein in a linear range of 62.5-251.1 ng/ml.



PD-1(Leu25-Gln167) hFc(Glu99-Ala330) 6 × His tag

## Product Description

Expression Region:550Research Topic:This protein is expressed in pro-B-cells and is thought to play a role in their differentiation. In mice, expression of this gene is induced in the thymus when anti-CD3 antibodies are injected and large numbers of thymocytes undergo apoptosis. Mice deficient for this gene bred on a BALB/c background developed dilated cardiomyopathy and died from congestive heart failure. These studies suggest that this gene product may also be important in T cell function and contribute to the prevention of autoimmune diseases.

Note: This product is for in vitro research use only