

## Human CTLA-4 Protein, hFc tag

Catalog No: #AP89607

Package Size: #AP89607-1 10ug #AP89607-2 100ug

Orders: order@signalwayantibody.com

Support: tech@signalwayantibody.com

## Description

Product Name	Human CTLA-4 Protein, hFc tag
Host Species	HEK293
Purification	The purity of the protein is greater than 95% as determined by SDS-PAGE and Coomassie blue staining.
Species Reactivity	Human
Immunogen Description	CTLA-4(Gln36-Ser161)+hFc(Glu99-Ala330)
Other Names	CTLA4, CD152
Calculated MW	39.6 kDa
Tag Info	C-Human Fc
Formulation	Lyophilized from sterile PBS, pH 7.4. Normally 5 % - 87 % trehalose is added as protectants before lyophilization.
Storage	Store at -80°C for 12 months (Avoid repeated freezing and thawing)

## Images

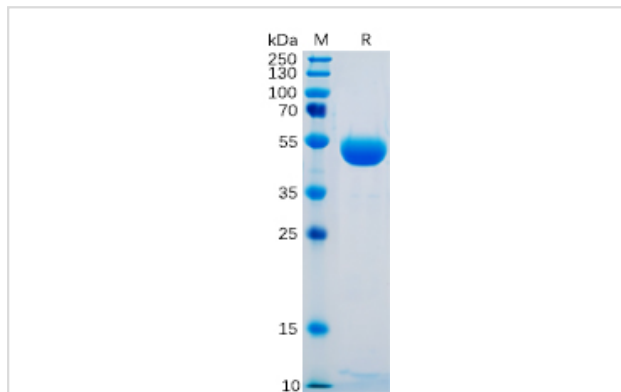


Figure 1. Human CTLA-4 Protein, hFc Tag on SDS-PAGE under reducing condition.



## Product Description

Expression Region:550Research Topic:This gene is a member of the immunoglobulin superfamily and encodes a protein which transmits an inhibitory signal to T cells. The protein contains a V domain, a transmembrane domain, and a cytoplasmic tail. Alternate transcriptional splice variants, encoding

different isoforms, have been characterized. The membrane-bound isoform functions as a homodimer interconnected by a disulfide bond, while the soluble isoform functions as a monomer. Mutations in this gene have been associated with insulin-dependent diabetes mellitus, Graves disease, Hashimoto thyroiditis, celiac disease, systemic lupus erythematosus, thyroid-associated orbitopathy, and other autoimmune diseases.

---

Note: This product is for in vitro research use only