

Human PD-L1 Protein, His tag

Catalog No: #AP89608

Package Size: #AP89608-1 10ug #AP89608-2 100ug

Orders: order@signalwayantibody.com

Support: tech@signalwayantibody.com

Description

Product Name	Human PD-L1 Protein, His tag
Host Species	HEK293
Purification	The purity of the protein is greater than 95% as determined by SDS-PAGE and Coomassie blue staining.
Species Reactivity	Human
Immunogen Description	PD-L1(Phe19-Arg328)+6xHis tag
Other Names	PD-L1, CD274, B7-H1, PDCD1L1, PDCD1LG1
Calculated MW	26.0 kDa
Tag Info	C-6xHis tag
Formulation	Lyophilized from sterile PBS, pH 7.4. Normally 5 % - 88 % trehalose is added as protectants before lyophilization.
Storage	Store at -80°C for 12 months (Avoid repeated freezing and thawing)

Images

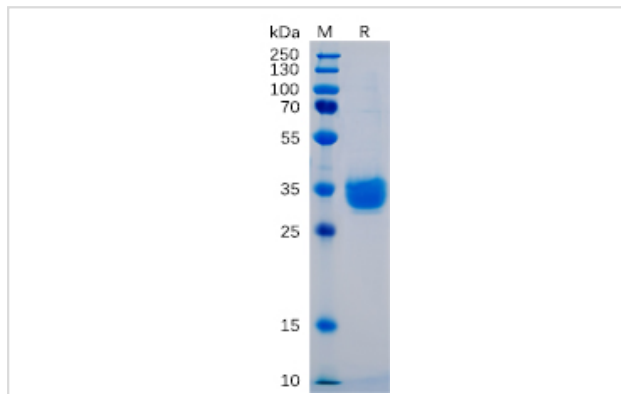
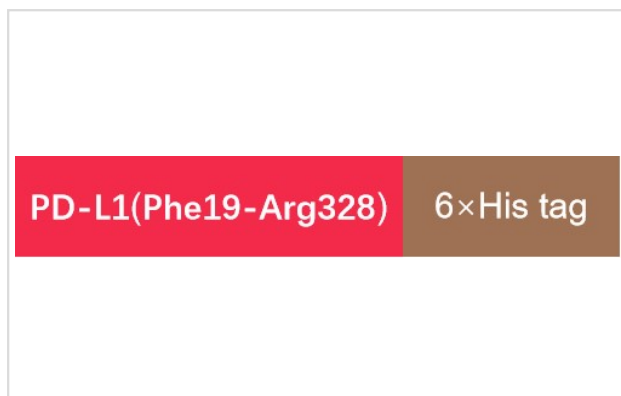


Figure 1. Human PD-L1 Protein, His Tag on SDS-PAGE under reducing condition.



Product Description

Expression Region:600Research Topic:This gene encodes an immune inhibitory receptor ligand that is expressed by hematopoietic and non-hematopoietic cells, such as T cells and B cells and various types of tumor cells. The encoded protein is a type I transmembrane protein that has

immunoglobulin V-like and C-like domains. Interaction of this ligand with its receptor inhibits T-cell activation and cytokine production. During infection or inflammation of normal tissue, this interaction is important for preventing autoimmunity by maintaining homeostasis of the immune response. In tumor microenvironments, this interaction provides an immune escape for tumor cells through cytotoxic T-cell inactivation. Expression of this gene in tumor cells is considered to be prognostic in many types of human malignancies, including colon cancer and renal cell carcinoma. Alternative splicing results in multiple transcript variants.

Note: This product is for in vitro research use only