

Human IgG1-Fc Protein

Catalog No: #AP89622

Package Size: #AP89622-1 10ug #AP89622-2 100ug

Orders: order@signalwayantibody.com

Support: tech@signalwayantibody.com

Description

Product Name	Human IgG1-Fc Protein
Host Species	HEK293
Purification	The purity of the protein is greater than 95% as determined by SDS-PAGE and Coomassie blue staining.
Species Reactivity	Human
Immunogen Description	hFc(Glu99-Ala330)
Other Names	IgG1 Fc Protein
Calculated MW	27.7 kDa
Tag Info	No tag
Formulation	Lyophilized from sterile PBS, pH 7.4. Normally 5 % - 102 % trehalose is added as protectants before lyophilization.
Storage	Store at -80°C for 12 months (Avoid repeated freezing and thawing)

Images

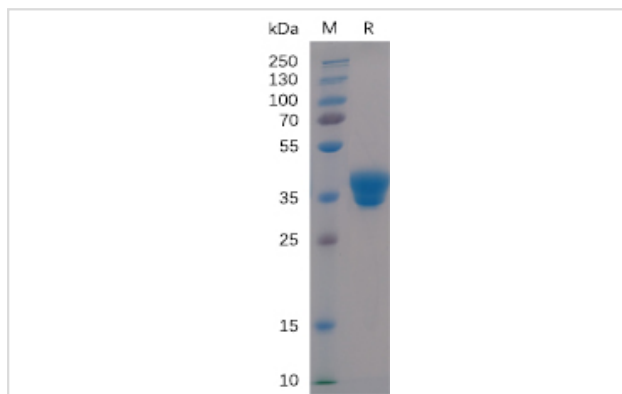


Figure 1. Human IgG1-Fc Protein on SDS-PAGE under reducing condition.

hFc(Glu99-Ala330)

Product Description

Expression Region:550Research Topic:IGHG1 (Immunoglobulin Heavy Constant Gamma 1 (G1m Marker)) is a Protein Coding gene. Diseases associated with IGHG1 include?Leukemia, Chronic Lymphocytic?and?Heavy Chain Deposition Disease. Among its related pathways are?Interleukin-4

and 13 signaling and IL4-mediated signaling events. Gene Ontology (GO) annotations related to this gene include antigen binding. An important paralog of this gene is IGHG3.

Note: This product is for in vitro research use only