

Human CD162 Protein, His Tag

Catalog No: #AP89625

Package Size: #AP89625-1 10ug #AP89625-2 100ug

Orders: order@signalwayantibody.com

Support: tech@signalwayantibody.com

Description

Product Name	Human CD162 Protein, His Tag
Host Species	HEK293
Purification	The purity of the protein is greater than 95% as determined by SDS-PAGE and Coomassie blue staining.
Species Reactivity	Human
Immunogen Description	CD162(Leu18-Cys320)+6xHis tag
Other Names	PSGL1,CD162,SELPLG,Selectin P ligand
Calculated MW	31.4 kDa
Tag Info	C- 6xHis tag
Formulation	Lyophilized from sterile PBS, pH 7.4. Normally 5 % - 105 % trehalose is added as protectants before lyophilization.
Storage	Store at -80°C for 12 months (Avoid repeated freezing and thawing)

Images

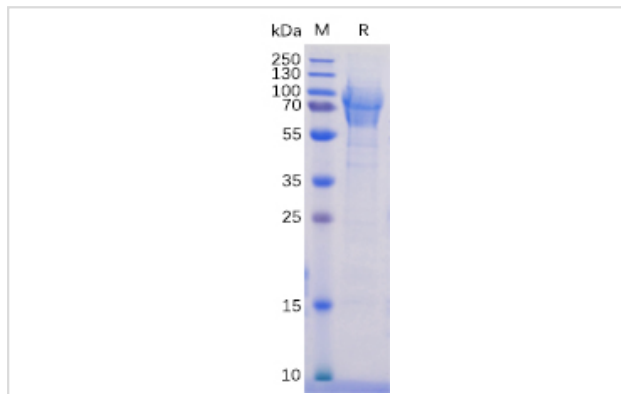


Figure 1. Human CD162 Protein, His Tag on SDS-PAGE under reducing condition.



Product Description

Expression Region:600Research Topic:This gene encodes a glycoprotein that functions as a high affinity counter-receptor for the cell adhesion molecules P-, E- and L- selectin expressed on myeloid cells and stimulated T lymphocytes. As such, this protein plays a critical role in leukocyte

trafficking during inflammation by tethering of leukocytes to activated platelets or endothelia expressing selectins. This protein requires two post-translational modifications, tyrosine sulfation and the addition of the sialyl Lewis x tetrasaccharide (sLex) to its O-linked glycans, for its high-affinity binding activity. Aberrant expression of this gene and polymorphisms in this gene are associated with defects in the innate and adaptive immune response. Alternate splicing results in multiple transcript variants.

Note: This product is for in vitro research use only