

PE anti-human CD16

Catalog No: #28018

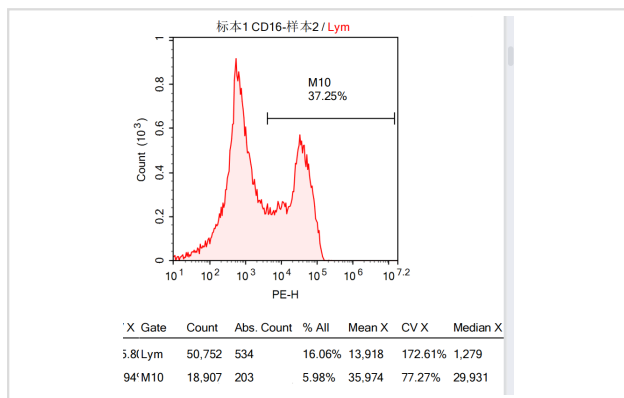
Orders: order@signalwayantibody.com

Support: tech@signalwayantibody.com

Description

Product Name	PE anti-human CD16
Clone No.	4ACB16
Isotype	Mouse IgG1
Applications	FC
Species Reactivity	Hu
Formulation	Phosphate-buffered solution, pH 7.4, containing 0.09% sodium azide and 0.2% (w/v) BSA
Storage	Store at 4°C. DO NOT FREEZE. LIGHT SENSITIVE MATERIAL.

Images



Note: This product is for in vitro research use only