

Caspase-1 Antibody

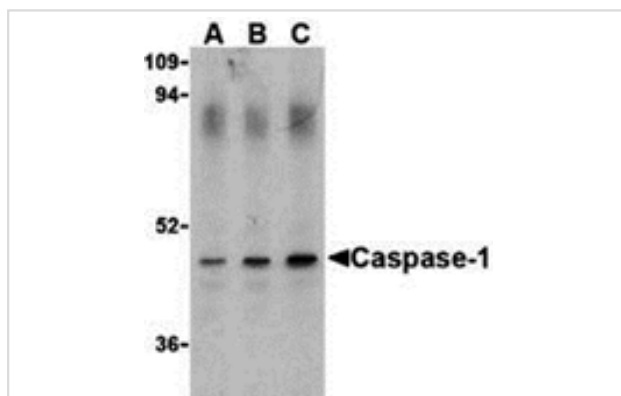
Catalog No: #24291

Orders: order@signalwayantibody.comSupport: tech@signalwayantibody.com

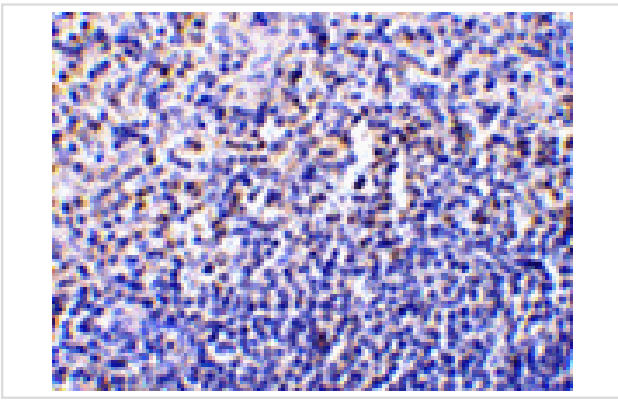
Description

Product Name	Caspase-1 Antibody
Host Species	Rabbit
Clonality	Polyclonal
Purification	Affinity chromatography purified via peptide column
Applications	ELISA WB IHC
Species Reactivity	Hu
Specificity	Depending on cell lines or tissues used, other cleavage products may be observed.
Immunogen Type	Peptide
Immunogen Description	Raised against a 15 amino acid peptide from near the middle of human Caspase-1.
Target Name	Caspase-1
Other Names	ICE, IL-1beta converting enzyme
Accession No.	Swiss-Prot:P29466Gene ID:834
Uniprot	P29466
GeneID	834;
Concentration	1mg/ml
Formulation	Supplied in PBS containing 0.02% sodium azide.
Storage	Can be stored at -20°C, stable for one year. As with all antibodies care should be taken to avoid repeated freeze thaw cycles. Antibodies should not be exposed to prolonged high temperatures.

Images



Western blot analysis of Caspase-1 in HeLa cell lysate with Caspase-1 antibody (IN) at (A) 0.5, (B) 1, and (C) 2 ug/mL.



Immunohistochemistry of caspase-1 in human spleen tissue with caspase-1 antibody at 10 ug/mL.

Background

Caspases are a family of cysteine proteases that can be divided into the apoptotic and inflammatory caspase subfamilies. Unlike the apoptotic caspases, members of the inflammatory subfamily are generally not involved in cell death but are associated with the immune response to microbial pathogens. Members of this subfamily include caspase-1, -4, -5, and -12 and can activate proinflammatory cytokines such as IL-1 β and IL-18. Caspase-1 was initially identified as an IL-1 β -converting enzyme; later experiments revealed it to be a mammalian homolog of the *C. elegans* cell death gene *ced-3* whose overexpression can induce apoptosis in fibroblasts.

Note: This product is for in vitro research use only