

Mcl-1 Antibody

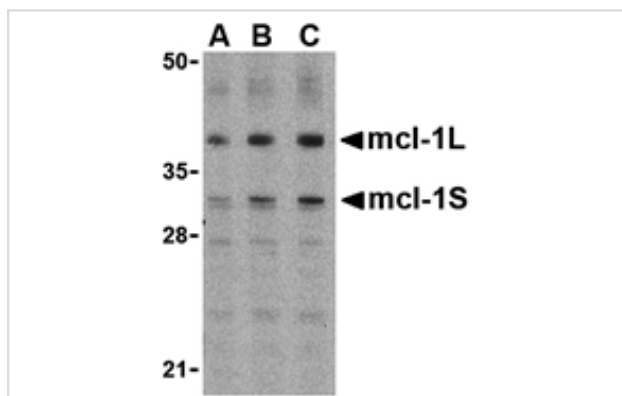
Catalog No: #24300

Orders: order@signalwayantibody.comSupport: tech@signalwayantibody.com

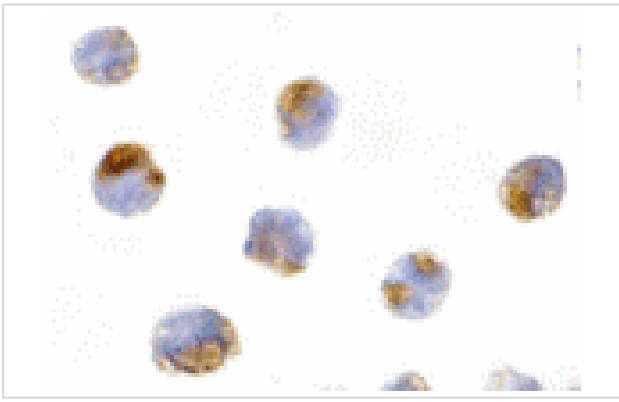
Description

Product Name	Mcl-1 Antibody
Host Species	Rabbit
Clonality	Polyclonal
Purification	Ion exchange chromatography purified
Applications	ELISA WB ICC
Species Reactivity	Hu
Specificity	Detects both isoforms of Mcl-1
Immunogen Type	Peptide
Immunogen Description	Raised against a peptide corresponding to 16 amino acids near the center of human Mcl-1.
Target Name	Mcl-1
Other Names	Myeloid cell leukemia 1
Accession No.	Swiss-Prot:Q07820Gene ID:4170
Uniprot	Q07820
GeneID	4170;
Concentration	1mg/ml
Formulation	Supplied in PBS containing 0.02% sodium azide.
Storage	Can be stored at -20°C, stable for one year. As with all antibodies care should be taken to avoid repeated freeze thaw cycles. Antibodies should not be exposed to prolonged high temperatures.

Images



Western blot analysis of Mcl-1 in Raji cell lysates with Mcl-1 antibody (IN) at (A) 0.5, (B) 1, and (C) 2 ug/mL.



Immunocytochemistry of Mcl-1 in Raji cells with Mcl-1 antibody at 10 ug/mL.

Background

Myeloid cell leukemia-1 (Mcl-1) is a member of the Bcl-2 family of proteins that can act to promote cell survival. While the mechanism by which Mcl-1 inhibits apoptosis is not known, it is thought that it may heterodimerize and neutralize pro-apoptotic members of the Bcl-2 family such as Bim or Bak. Mcl-1 was originally identified in differentiating myeloid cells, but has since been shown to be expressed in multiple cell types. Mcl-1 is essential for embryogenesis and for the development and maintenance of B and T lymphocytes in animals. Mcl-1 exists as at least two distinct isoforms designated Mcl-1L and Mcl-1S. In marked contrast to the larger isoform of Mcl-1, overexpression of Mcl-1S promotes cell death.

Note: This product is for in vitro research use only