

Rheb Antibody

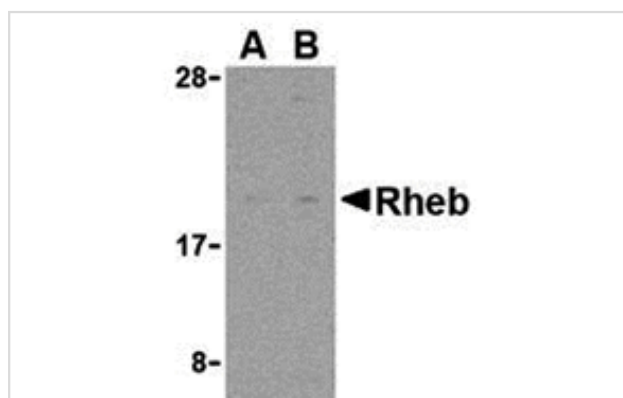
Catalog No: #24306

Orders: order@signalwayantibody.comSupport: tech@signalwayantibody.com

Description

Product Name	Rheb Antibody
Host Species	Rabbit
Clonality	Polyclonal
Purification	Affinity chromatography purified via peptide column
Applications	ELISA WB
Species Reactivity	Hu Ms Rt
Specificity	Post-translationally modified Rheb is sometimes observed at higher molecular weight.
Immunogen Type	Peptide
Immunogen Description	Raised against a 14 amino acid peptide from the amino terminus of human Rheb.
Target Name	Rheb
Accession No.	Swiss-Prot:Q15382Gene ID:6009
Uniprot	Q15382
GeneID	6009;
Concentration	1mg/ml
Formulation	Supplied in PBS containing 0.02% sodium azide.
Storage	Can be stored at -20°C, stable for one year. As with all antibodies care should be taken to avoid repeated freeze thaw cycles. Antibodies should not be exposed to prolonged high temperatures.

Images



Western blot analysis of Rheb in rat heart cell lysate with Rheb antibody at (A) 2 and (B) 4 ug/mL.

Background

Rheb (Ras homolog enriched in brain) is an evolutionarily conserved member of the Ras family of small GTP-binding proteins originally found to be rapidly induced by synaptic activity in the hippocampus following seizure. While it is expressed at relatively high levels in the brain, Rheb is widely expressed in other tissues and may be induced by growth factor stimulation. Similar to other family members, Rheb triggers activation of the Raf-MEK-MAPK pathway. Biochemical and genetic studies demonstrate that Rheb has an important role in regulating the insulin/Target of rapamycin (TOR) signaling pathway. TOR is a serine/threonine protein kinase that acts as a sensor for ATP and amino acids, balancing the availability of nutrients with protein translation and cell growth. A dimeric protein complex termed TSC1/TSC2 indirectly inhibits TOR activity by inhibiting Rheb via the GAP activity of TSC2.

Note: This product is for in vitro research use only