

## TRAF3 Antibody

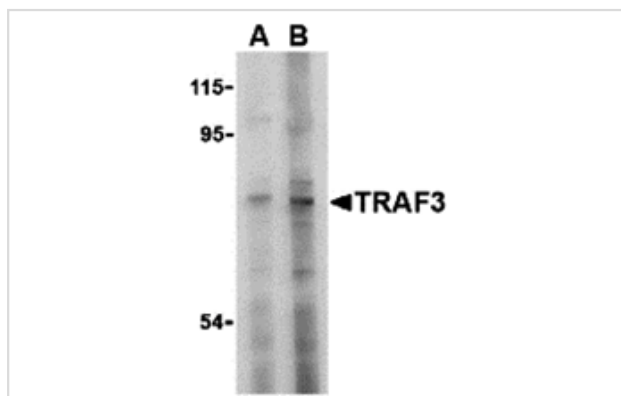
Catalog No: #24346

Orders: [order@signalwayantibody.com](mailto:order@signalwayantibody.com)Support: [tech@signalwayantibody.com](mailto:tech@signalwayantibody.com)

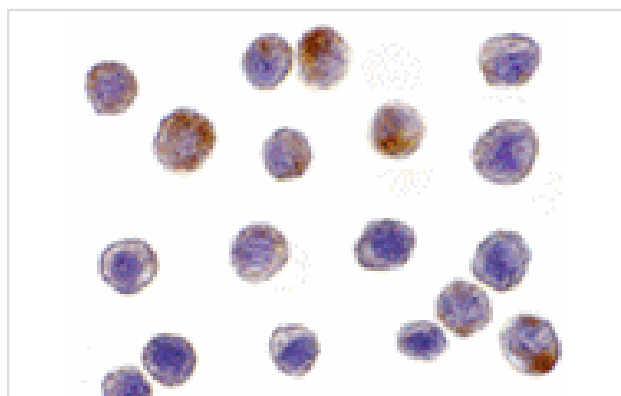
## Description

Product Name	TRAF3 Antibody
Host Species	Rabbit
Clonality	Polyclonal
Purification	Affinity chromatography purified via peptide column
Applications	ELISA WB ICC
Species Reactivity	Hu Ms Rt
Immunogen Type	Peptide
Immunogen Description	Raised against a 15 amino acid peptide from near the amino terminus of human.
Target Name	TRAF3
Other Names	TNF receptor-associated factor 3, CD40 binding protein, LMP1 associated protein 1, CD40BP, LAP1
Accession No.	Swiss-Prot:Q13114 Gene ID:7187
Uniprot	Q13114
GeneID	7187;
Concentration	1mg/ml
Formulation	Supplied in PBS containing 0.02% sodium azide.
Storage	Can be stored at -20°C, stable for one year. As with all antibodies care should be taken to avoid repeated freeze thaw cycles. Antibodies should not be exposed to prolonged high temperatures.

## Images



Western blot analysis of TRAF3 in HeLa cell lysate with TRAF3 antibody at (A) 2 and (B) 4 ug/mL.



Immunocytochemistry of TRAF3 in HeLa cells with TRAF3 antibody at 10 ug/mL.

## Background

---

Tumor necrosis factor (TNF) receptor associated factors (TRAFs) are the major signal transducers for the TNF receptor superfamily and the interleukin-1 receptor/Toll-like receptor (IL-1/TLR) superfamily. TRAF3 was first identified by its interaction with CD40 and the Epstein-Barr virus transforming protein LMP1. Several TRAF3 mRNA splice variants exist and some of these can activate the transcription factor NF- $\kappa$ B. Besides CD40, TRAF3 also interacts with the TRFR superfamily member lymphotoxin-beta receptor (LTbetaR) in association with TRAF2 and the apoptosis inhibitors cIAP1 and Smac. It has been suggested that TRAF3 induces mitochondria-mediated apoptosis upon binding of the TNF family cytokine LIGHT by LTbetaR.

---

Note: This product is for in vitro research use only