

Beclin-1 Antibody

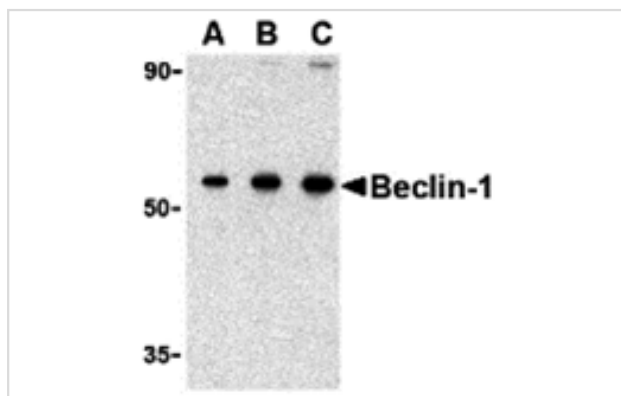
Catalog No: #24352

Orders: order@signalwayantibody.comSupport: tech@signalwayantibody.com

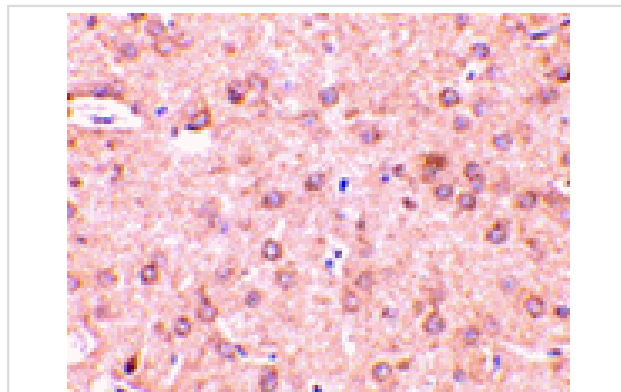
Description

Product Name	Beclin-1 Antibody
Host Species	Rabbit
Clonality	Polyclonal
Purification	Affinity chromatography purified via peptide column
Applications	ELISA WB IHC
Species Reactivity	Hu Ms Rt
Immunogen Type	Peptide
Immunogen Description	Raised against a 17 amino acid peptide from near the amino terminus of human Beclin-1.
Target Name	Beclin-1
Other Names	Beclin-1, Coiled-coil myosin-like Bcl-2-interacting protein
Accession No.	Swiss-Prot:Q14457 Gene ID:8678
Uniprot	Q14457
GeneID	8678;
Concentration	1mg/ml
Formulation	Supplied in PBS containing 0.02% sodium azide.
Storage	Can be stored at -20°C, stable for one year. As with all antibodies care should be taken to avoid repeated freeze thaw cycles. Antibodies should not be exposed to prolonged high temperatures.

Images



Western blot analysis of Beclin-1 in 293 cell lysate with Beclin-1 antibody at (A) 0.5, (B) 1 and (C) 2 ug/mL.



Immunohistochemistry of beclin-1 in rat brain tissue with beclin-1 antibody at 2 ug/mL.

Background

Autophagy, the process of bulk degradation of cellular proteins through an autophagosomic-lysosomal pathway is important for normal growth control and may be defective in tumor cells. Beclin-1, a coiled-coil Bcl-2-interacting protein homologous to the yeast autophagy gene *apg6*, is a mammalian autophagy gene that can inhibit tumorigenesis and is expressed at reduced levels in human breast carcinoma, suggesting that defects in autophagy proteins may contribute to the development or progression of tumors. Bcl-2 can bind to Beclin-1 and inhibit Beclin-1-dependent autophagy in yeast and mammalian cells, suggesting that Bcl-2 functions as an anti-autophagy protein as well as an anti-apoptotic protein, which helps maintain autophagy at levels that are more compatible with cell survival rather than cell death.

Note: This product is for in vitro research use only