

BAP31 Antibody

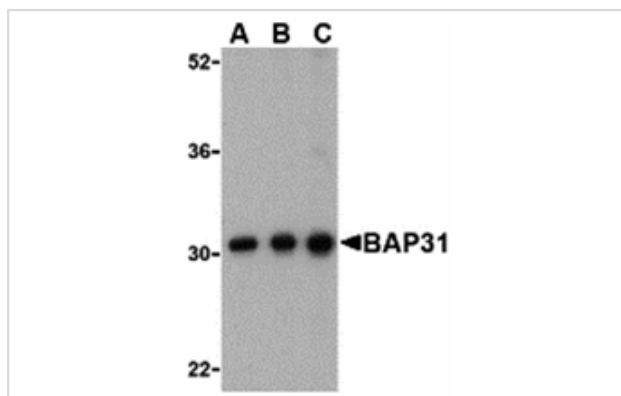
Catalog No: #24374

Orders: order@signalwayantibody.comSupport: tech@signalwayantibody.com

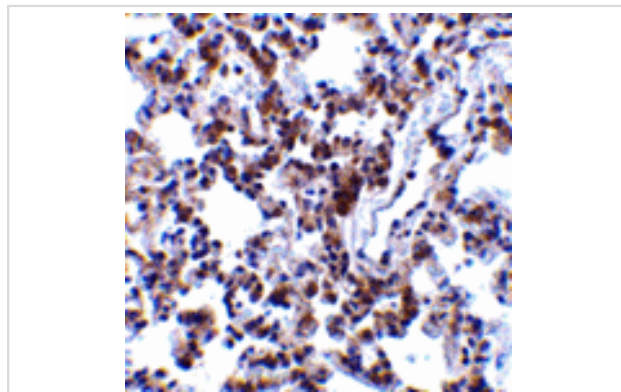
Description

Product Name	BAP31 Antibody
Host Species	Rabbit
Clonality	Polyclonal
Purification	Affinity chromatography purified via peptide column
Applications	ELISA WB IHC
Species Reactivity	Hu Ms Rt
Immunogen Type	Peptide
Immunogen Description	Raised against a 17 amino acid peptide from near the carboxy terminus of human BAP31.
Target Name	BAP31
Other Names	BAP31, B cell receptor-associated protein 31 BCR associated protein 31
Accession No.	Swiss-Prot:P51572Gene ID:10134
Uniprot	P51572
GeneID	10134;
Concentration	1mg/ml
Formulation	Supplied in PBS containing 0.02% sodium azide.
Storage	Can be stored at -20°C, stable for one year. As with all antibodies care should be taken to avoid repeated freeze thaw cycles. Antibodies should not be exposed to prolonged high temperatures.

Images



Western blot analysis of BAP31 in Ramos cell lysate with BAP31 antibody at (A) 0.5, (B) 1 and (C) 2µg/mL.



Immunohistochemistry of BAP31 in rat lung tissue with BAP31 antibody at 2 µg/mL.

Background

Bap31 and the related protein Bap29 are endoplasmic reticulum (ER) and ER-vesicle membrane proteins and members of the B-cell receptor-associated protein family. These two proteins are highly homologous and can form homo- and heterodimers. Bap31 is thought to be involved in the intracellular trafficking of several molecules such as MHC Class I molecules and CD11b/CD18. It may also play a role in the initiation of ER stress-induced apoptosis through its association with caspase-8 via a death effector domain in its cytoplasmic tail, possibly through the promotion of membrane fragmentation and the release of cytochrome c from mitochondria. Bap31 itself contains two caspase cleavage sites and is cleaved during apoptosis. The p20 fragment of Bap31, when expressed ectopically, is also a potent inducer cell death.

Note: This product is for in vitro research use only