

## ATF6 Antibody

Catalog No: #24383

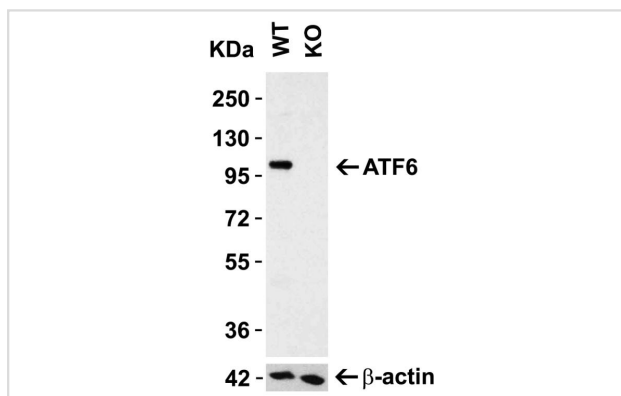
Orders: order@signalwayantibody.com

Support: tech@signalwayantibody.com

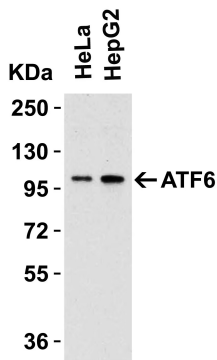
## Description

Product Name	ATF6 Antibody
Host Species	Rabbit
Clonality	Polyclonal
Purification	Affinity chromatography purified via peptide column
Applications	ELISA, IHC-P, WB
Species Reactivity	Hu, MsoO Rt
Immunogen Type	Peptide
Immunogen Description	Raised against a 17 amino acid peptide from near the amino terminus of human ATF6.
Target Name	ATF6
Other Names	Activating transcription factor 6
Accession No.	Swiss-Prot:P18850 Gene ID:22926
Uniprot	P18850
GeneID	22926;
Concentration	1mg/ml
Formulation	Supplied in PBS containing 0.02% sodium azide.
Storage	Stored at 4°C for three months and -20°C, stable for up to one year. As with all antibodies care should be taken to avoid repeated freeze thaw cycles. Antibodies should not be exposed to prolonged high temperatures.

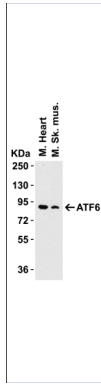
## Images



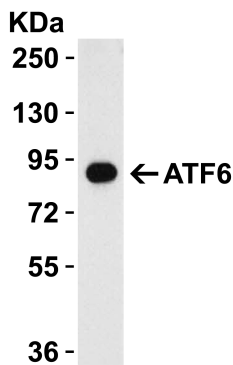
KO Validation of ATF6 Loading: 15 ug of human HeLa cell lysate Antibodies ATF6, 0.5 ug/mL, 1 h incubation at RT in 5% NFDm/TBST. Secondary: Goat Anti-Rabbit IgG HRP conjugate at 1:10000 dilution.



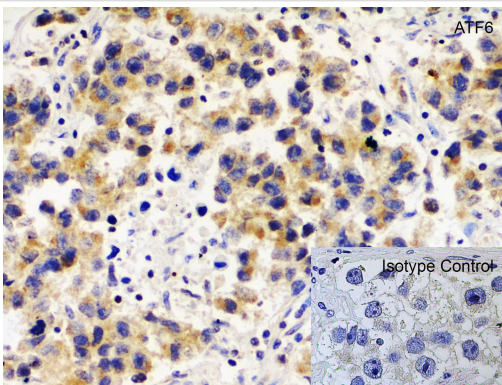
WB Validation in Human Cell Lines Loading: 15 ug of human cell lysate Antibodies ATF6, 1 ug/mL , 1 h incubation at RT in 5% NFDm/TBST. Secondary: Goat Anti-Rabbit IgG HRP conjugate at 1:10000 dilution. Secondary: Goat Anti-Rabbit IgG HRP conjugate at 1:10000 dilution. Secondary: Goat Anti-Rabbit IgG HRP conjugate at 1:10000 dilution. Secondary: Goat Anti-Rabbit IgG HRP conjugate at 1:10000 dilution.



WB Validation in Mouse Tissue Loading: 15 ug of mouse tissue lysate Antibodies: ATF6, 1 ug/mL , 1 h incubation at RT in 5% NFDm/TBST. Secondary: Goat Anti-Rabbit IgG HRP conjugate at 1:10000 dilution.

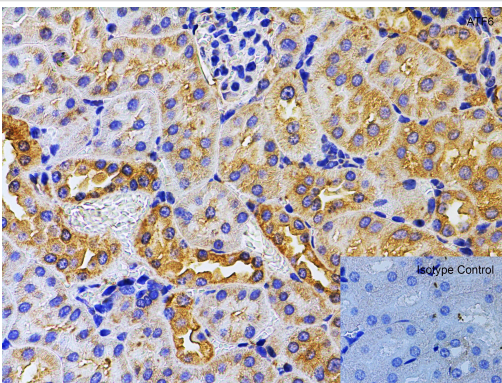


WB Validation in Rat Heart Loading: 15 ug of rat kidney lysate Antibodies: ATF6, 1 ug/mL , 1 h incubation at RT in 5% NFDm/TBST. Secondary: Goat Anti-Rabbit IgG HRP conjugate at 1:10000 dilution.



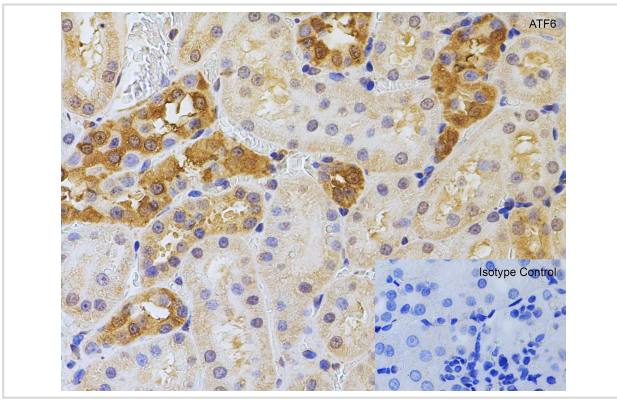
#### Immunohistochemistry Validation of ATF6 in Human Testis Tissue

Immunohistochemical analysis of paraffin-embedded human testis tissue using anti-ATF6 antibody at 5 ug/ml. Tissue was fixed with formaldehyde and blocked with 10% serum for 1 h at RT; antigen retrieval was by heat mediation with a citrate buffer (pH6). Samples were incubated with primary antibody overnight at 4°C. A goat anti-rabbit IgG H&L (HRP) at 1/250 was used as secondary. Counter stained with Hematoxylin.



#### Immunohistochemistry Validation of ATF6 in Mouse Kidney Tissue

Immunohistochemical analysis of paraffin-embedded mouse kidney tissue using anti-ATF6 antibody at 5 ug/ml. Tissue was fixed with formaldehyde and blocked with 10% serum for 1 h at RT; antigen retrieval was by heat mediation with a citrate buffer (pH6). Samples were incubated with primary antibody overnight at 4°C. A goat anti-rabbit IgG H&L (HRP) at 1/250 was used as secondary. Counter stained with Hematoxylin.



#### Immunohistochemistry Validation of ATF6 in Rat Kidney Tissue

Immunohistochemical analysis of paraffin-embedded rat kidney tissue using anti-ATF6 antibody at 5 ug/ml. Tissue was fixed with formaldehyde and blocked with 10% serum for 1 h at RT; antigen retrieval was by heat mediation with a citrate buffer (pH6). Samples were incubated with primary antibody overnight at 4°C. A goat anti-rabbit IgG H&L (HRP) at 1/250 was used as secondary. Counter stained with Hematoxylin.

## Background

Disruptions of protein folding and maturation in the endoplasmic reticulum (ER) result in the activation of the unfolded protein response (UPR), an integrated cellular signaling pathway that transmits information from the ER lumen to the cytoplasm and nucleus. Activating transcription factor 6 (ATF6) as well as the ER-transmembrane protein kinases IRE1p and PERK are the major transducers of the UPR. ATF6 is an ER transmembrane protein that is normally bound to the ER chaperone GRP78, but upon ER stress is released from GRP78 and proteolytically cleaved to yield a cytosolic fragment which then migrates to the nucleus, and together with the transcription factor XBP-1, activates transcription of UPR-responsive genes. ATF6 has two isoforms (ATF6 $\alpha$  and ATF6 $\beta$ ); only ATF6 $\alpha$  is recognized by this antibody.

Note: This product is for in vitro research use only