

BMI-1 Antibody

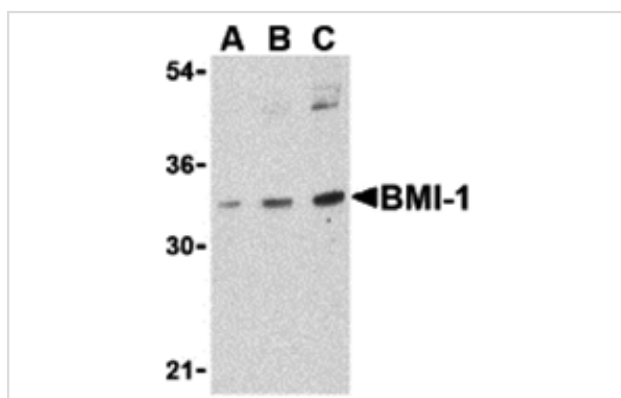
Catalog No: #24394

Orders: order@signalwayantibody.comSupport: tech@signalwayantibody.com

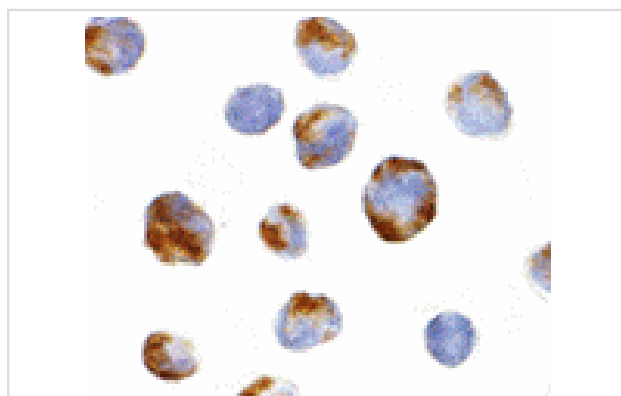
Description

Product Name	BMI-1 Antibody
Host Species	Rabbit
Clonality	Polyclonal
Purification	Affinity chromatography purified via peptide column
Applications	ELISA WB ICC
Species Reactivity	Hu Ms Rt
Immunogen Type	Peptide
Immunogen Description	Raised against a peptide corresponding to 15 amino acids near the center of human BMI-1.
Target Name	BMI-1
Other Names	Polycomb group RING finger protein 4, RNF51
Accession No.	P35226
Uniprot	P35226
GeneID	100532731;648;
Concentration	1mg/ml
Formulation	Supplied in PBS containing 0.02% sodium azide.
Storage	Can be stored at -20°C, stable for one year. As with all antibodies care should be taken to avoid repeated freeze thaw cycles. Antibodies should not be exposed to prolonged high temperatures.

Images



Western blot analysis of BMI-1 in K562 cell lysate with BMI-1 antibody at (A) 0.5, (B) 1 and (C) 2 ug/mL.



Immunocytochemistry of BMI-1 in K562 cells with BMI-1 antibody at 10 ug/mL.

Background

The transcriptional repressor BMI-1 was first identified as a proto-oncogene frequently activated by Moloney murine leukemia proviral insertions in mice and cooperating with c-myc in the generation of mouse lymphomas. BMI-1 is involved in segment specification, cell growth and maintenance, transcriptional regulation, and chromatin modification. A major target of BMI-1 is the ink4a locus which encodes tumor suppressor proteins p16 and p19Arf, which are important in tumor progression and thought to be critical in cell proliferation and senescence. Recent studies have also shown that BMI-1 is required for the maintenance of adult normal and leukemic stem cells, suggesting that BMI-1 could be an attractive therapeutic target for stem cell proliferation and renewal as well as for anti-cancer strategies.

Note: This product is for in vitro research use only