

Beta-actin Antibody

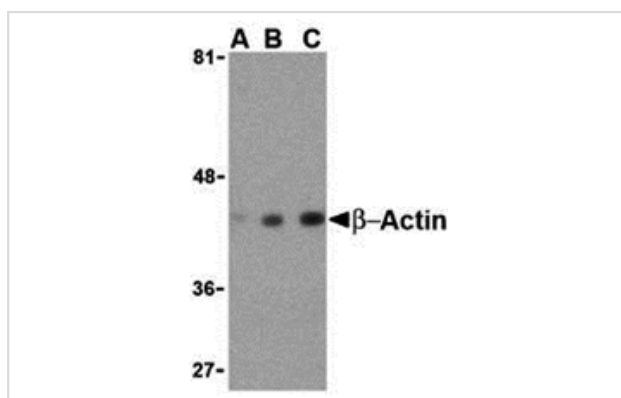
Catalog No: #24404

Orders: order@signalwayantibody.comSupport: tech@signalwayantibody.com

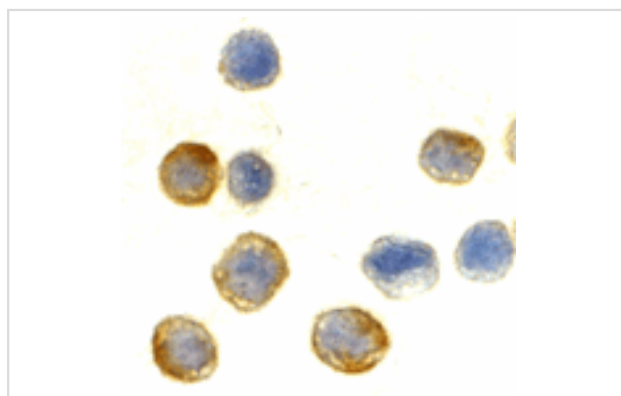
Description

Product Name	Beta-actin Antibody
Host Species	Rabbit
Clonality	Polyclonal
Purification	Affinity chromatography purified via peptide column
Applications	ELISA WB ICC
Species Reactivity	Hu Ms Rt
Immunogen Type	Peptide
Immunogen Description	Raised against a 16 amino acid peptide from near the carboxy terminus of human b-actin.
Target Name	Beta-actin
Other Names	Beta actin, b actin
Accession No.	Swiss-Prot:P60709Gene ID:60
Uniprot	P60709
GeneID	60;
Concentration	1mg/ml
Formulation	Supplied in PBS containing 0.02% sodium azide.
Storage	Can be stored at -20°C, stable for one year. As with all antibodies care should be taken to avoid repeated freeze thaw cycles. Antibodies should not be exposed to prolonged high temperatures.

Images



Western blot analysis of beta-actin in HeLa cell lysate with beta-actin antibody at (A) 0.5, (B) 1 and (C) 2 ug/mL.



Immunocytochemistry of beta-actin in HeLa cells with beta-actin antibody at 10ug/mL.

Background

Actins are highly conserved proteins that are involved in cell motility, structure and integrity, processes that are crucial for tissue development and the development of organism. The actin cytoskeleton is one of the principal drivers of cell motility and is capable of responding to complex signaling cascades. Recent evidence suggests that it may play key roles in regulating apoptosis and aging. Beta actin is one of six different actin isoforms which have been identified. Like GAPDH, beta-actin is constitutively expressed at high levels in almost all tissues and cell lines making it ideal for use as a loading control marker in immunoblots.

Note: This product is for in vitro research use only