

GAPDH Antibody

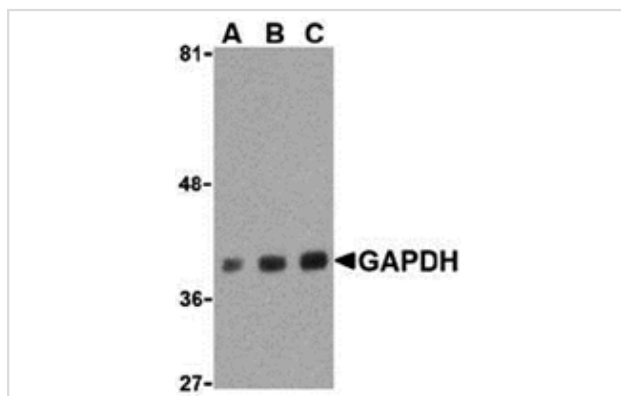
Catalog No: #24406

Orders: order@signalwayantibody.comSupport: tech@signalwayantibody.com

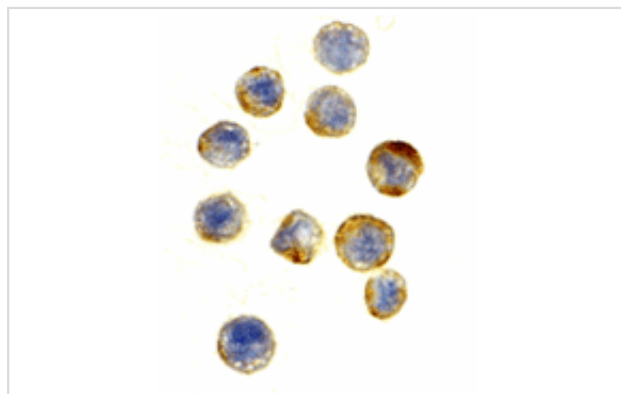
Description

Product Name	GAPDH Antibody
Host Species	Rabbit
Clonality	Polyclonal
Purification	Affinity chromatography purified via peptide column
Applications	ELISA WB IHC
Species Reactivity	Hu Ms Rt
Immunogen Type	Peptide
Immunogen Description	Raised against a 16 amino acid peptide from near the carboxy terminus of human GAPDH.
Target Name	GAPDH
Other Names	Glyceraldehyde-3-phosphate dehydrogenase, G3PDH, GAPD
Accession No.	P04406
Uniprot	P04406
GeneID	2597;
Concentration	1mg/ml
Formulation	Supplied in PBS containing 0.02% sodium azide.
Storage	Can be stored at -20°C, stable for one year. As with all antibodies care should be taken to avoid repeated freeze thaw cycles. Antibodies should not be exposed to prolonged high temperatures.

Images



Western blot analysis of GAPDH in HeLa cell lysate with GAPDH antibody at (A) 0.5, (B) 1 and (C) 2 ug/mL.



Immunohistochemical staining of GAPDH in HeLa cells at a dilution of 10 ug/mL.

Background

Glyceraldehyde-3-phosphate dehydrogenase (GAPDH) catalyzes the reversible oxidative phosphorylation of glyceraldehyde-3-phosphate in the presence of inorganic phosphate and nicotinamide adenine dinucleotide (NAD), an important energy-yielding step in carbohydrate metabolism. Recent evidence suggests that it also is involved in a number of cellular processes such as membrane fusion, phosphotransferase activity, DNA replication and repair, and nuclear RNA export. GAPDH has also been implicated in playing a role in different pathologies such as cancer progression, apoptosis, and neuronal diseases such as Alzheimer's and Huntington's disease. GAPDH is constitutively expressed at high levels in almost all tissues and cell lines making it ideal for use as a loading control marker in immunoblots.

Note: This product is for in vitro research use only