

## APH1 Antibody

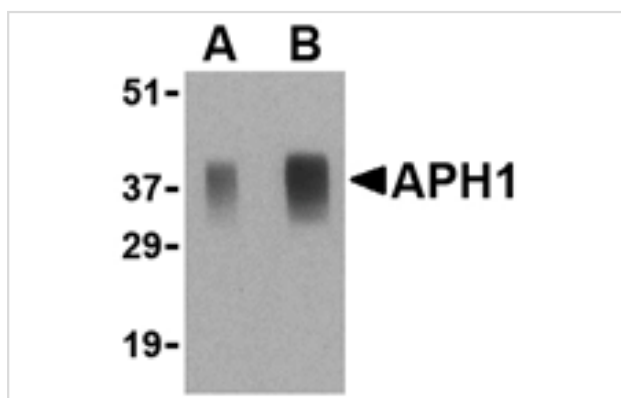
Catalog No: #24480

Orders: [order@signalwayantibody.com](mailto:order@signalwayantibody.com)Support: [tech@signalwayantibody.com](mailto:tech@signalwayantibody.com)

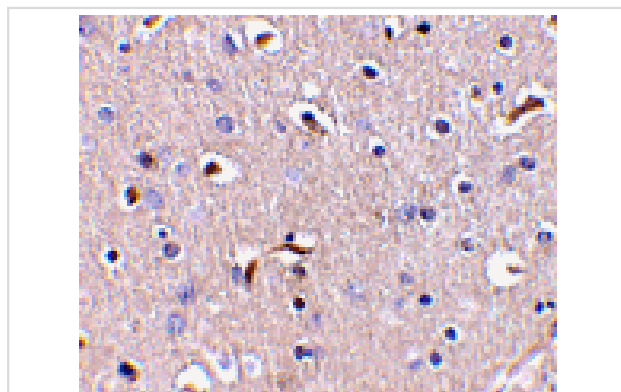
## Description

Product Name	APH1 Antibody
Host Species	Rabbit
Clonality	Polyclonal
Purification	Affinity chromatography purified via peptide column
Applications	ELISA WB IHC
Species Reactivity	Hu Ms Rt
Immunogen Type	Peptide
Immunogen Description	Raised against a 18 amino acid peptide from near the center of human APH1.
Target Name	APH1
Other Names	Anterior pharynx defective 1, presenilin stabilization factor
Accession No.	Swiss-Prot:Q96BI3Gene ID:51107
Uniprot	Q96BI3
GeneID	51107;
Concentration	1mg/ml
Formulation	Supplied in PBS containing 0.02% sodium azide.
Storage	Can be stored at -20°C, stable for one year. As with all antibodies care should be taken to avoid repeated freeze thaw cycles. Antibodies should not be exposed to prolonged high temperatures.

## Images



Western blot analysis of APH1 in human brain tissue lysate with APH1 antibody at (A) 0.5 and (B) 1 ug/mL.



Immunohistochemistry of APH1 in human brain tissue with APH1 antibody at 5 ug/mL.

## Background

---

APH1 was initially identified as a component of the Notch pathway in *C. elegans*. Along with nicastrin, PEN2, and presenilin-1 APH1 is an essential component of the gamma-secretase complex which cleave the amyloid precursor protein (APP) at what are known as the gamma- and epsilon-sites and can lead to the accumulation of the Amyloid beta peptide (Abeta) cleavage product that is associated with Alzheimer's disease. APH1 exists in at least three distinct isoforms with APH1a as the principal isoform present in the gamma-secretase complex. Mice deficient in this isoform, but not the other two, were lethal at E10.5, with impaired vascular and neural development observed.

---

Note: This product is for in vitro research use only