

## p70 S6 Kinase(Phospho-Thr421) Antibody

Catalog No: #11254

Package Size: #11254-1 50ul #11254-2 100ul

Orders: [order@signalwayantibody.com](mailto:order@signalwayantibody.com)Support: [tech@signalwayantibody.com](mailto:tech@signalwayantibody.com)

## Description

|                       |   |
|-----------------------|---|
| Product Name          | p70 S6 Kinase(Phospho-Thr421) Antibody  |
| Host Species          | Rabbit  |
| Clonality             | Polyclonal  |
| Purification          | Antibodies were produced by immunizing rabbits with synthetic phosphopeptide and KLH conjugates.<br>Antibodies were purified by affinity-chromatography using epitope-specific phosphopeptide. Non-phospho specific antibodies were removed by chromatography using non-phosphopeptide. |
| Applications          | WB IHC IF   |
| Species Reactivity    | Hu Ms Rt  |
| Specificity           | The antibody detects endogenous level of p70 S6 Kinase only when phosphorylated at threonine 421.   |
| Immunogen Type        | Peptide-KLH   |
| Immunogen Description | Peptide sequence around phosphorylation site of threonine 421 (P-R-T(p)-P-V) derived from Human p70 S6 Kinase.  |
| Target Name           | p70 S6 Kinase   |
| Modification          | Phospho   |
| Other Names           | KS6B1; P70-S6K; RPS6KB1; S6K;   |
| Accession No.         | Swiss-Prot: P23443NCBI Protein: NP_003152.1   |
| Uniprot               | P23443  |
| GeneID                | 6198;   |
| Concentration         | 1.0mg/ml  |
| Formulation           | Supplied at 1.0mg/mL in phosphate buffered saline (without Mg <sup>2+</sup> and Ca <sup>2+</sup> ), pH 7.4, 150mM NaCl, 0.02% sodium azide and 50% glycerol.  |
| Storage               | Store at -20°C for long term preservation (recommended). Store at 4°C for short term use.   |

## Application Details

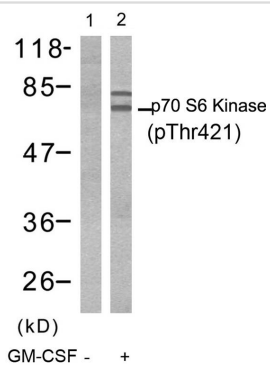
Predicted MW: 70 85 kd

Western blotting: 1:500~1:1000

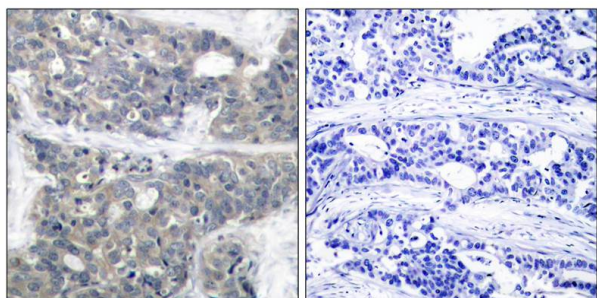
Immunohistochemistry: 1:50~1:100

Immunofluorescence: 1:100~1:200

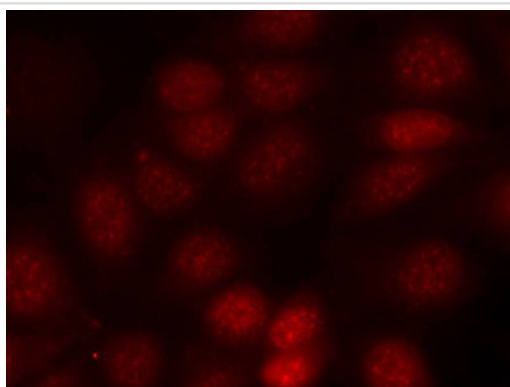
## Images



Western blot analysis of extracts from Jurkat cells untreated(lane 1) or treated with GM-CSF(lane 2) using p70 S6 Kinase(Phospho-Thr421) Antibody #11254.



Immunohistochemical analysis of paraffin-embedded human breast carcinoma tissue using p70 S6 Kinase(Phospho-Thr421) Antibody #11254(left) or the same antibody preincubated with blocking peptide(right).



Immunofluorescence staining of methanol-fixed MCF cells using p70 S6 Kinase(Phospho-Thr421) Antibody #11254.

## Background

Phosphorylates specifically ribosomal protein S6 in response to insulin or several classes of mitogens. Promotes protein synthesis by phosphorylating PDCD4 at 'Ser-67' and targeting it for degradation.

Xiao-Feng, et al. (2003) Le1 30 Volume 22: 484-497

An WL, et al. (2003) Am J Pathol. 163(2): 591-607.

Le XF, et al. (2003) Oncogene.22(4): 484-97

Note: This product is for in vitro research use only