

PD-1 Antibody

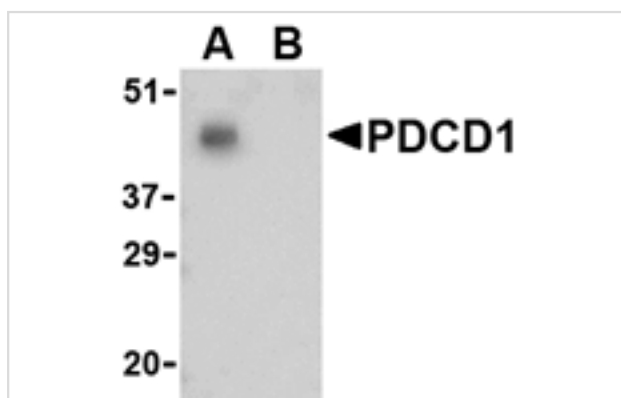
Catalog No: #24505

Orders: order@signalwayantibody.comSupport: tech@signalwayantibody.com

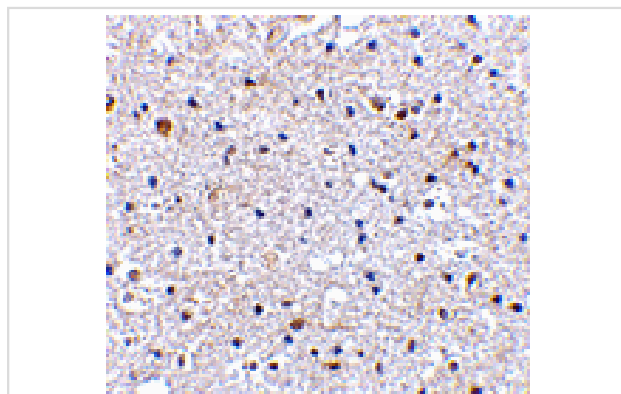
Description

Product Name	PD-1 Antibody
Host Species	Rabbit
Clonality	Polyclonal
Purification	Affinity chromatography purified via peptide column
Applications	ELISA WB IHC
Species Reactivity	Hu Ms
Immunogen Type	Peptide
Immunogen Description	Raised against a 16 amino acid peptide from near the carboxy terminus of human PD-1.
Target Name	PD-1
Other Names	Programmed cell death 1, PDCD1, CD279
Accession No.	Q15116
Uniprot	Q15116
GeneID	5133;
Concentration	1mg/ml
Formulation	Supplied in PBS containing 0.02% sodium azide.
Storage	Can be stored at -20°C, stable for one year. As with all antibodies care should be taken to avoid repeated freeze thaw cycles. Antibodies should not be exposed to prolonged high temperatures.

Images



Western blot analysis of PD-1 in THP-1 cell lysate with PD-1 antibody at 1 ug/mL in the (A) absence and (B) presence of blocking peptide.



Immunohistochemistry of PD-1 in human brain tissue with PD-1 antibody at 2.5 ug/mL.

Background

Cell-mediated immune responses are initiated by T lymphocytes that are themselves stimulated by cognate peptides bound to MHC molecules on antigen-presenting cells (APC). T-cell activation is generally self-limited as activated T cells express receptors such as PD-1 (also known as PDCD-1) that mediate inhibitory signals from the APC. PD-1 can bind two different but related ligands, PDL-1 and PDL-2. Upon binding to either of these ligands, signals generated by PD-1 inhibit the activation of the immune response in the absence of "danger signals" such as LPS or other molecules associated with bacteria or other pathogens. Evidence for this is seen in PD1-null mice who exhibit hyperactivated immune systems and autoimmune diseases.

Note: This product is for in vitro research use only